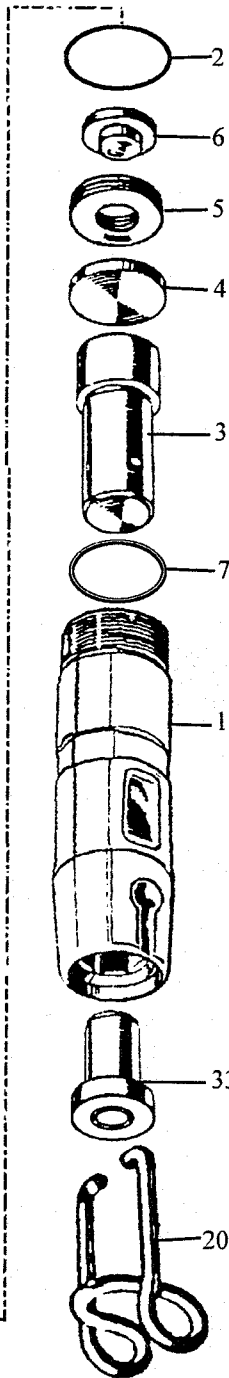
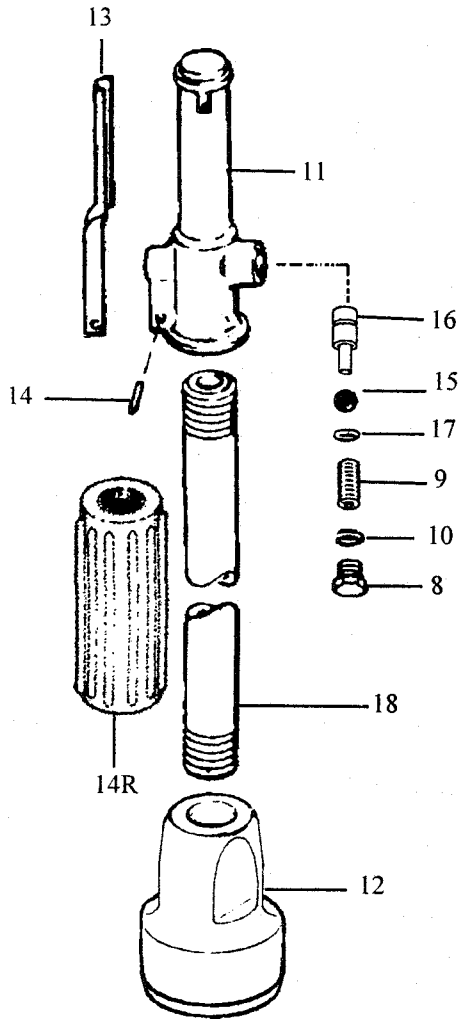


AirPro
AirPro

170-LR-5 HEAVY DUTY SCRAPER

PARTS



INDEX	PART	DESCRIPTION
1	6161H	CYLINDER w/ REPLACEABLE BUSHING (HEX .580")
2	6162	CYLINDER "O" -RING
3	6163	PISTON
4	6164	BUMPER VALVE PLATE
5	6165	VALVE SPRINGS (3)
6	6166	UPPER VALVE PLATE
7	6167	LOWER VALVE RING
8	6509-A	THROTTLE VALVE PLUG
9	6139	THROTTLE BALL SPRING
10	6510	THROTTLE VALVE PLUG "O"-RING
NS	6500-A	THROTTLE BODY COMPLETE (INDEX #8-11, & #13-17)
11	6501-A	THROTTLE BODY BARE
12	6112	SOLID BACKHEAD
NS	6112-C	THROTTLE ASSBLY COMPLETE (INDEX #8 THRU 18)
13	6503	THROTTLE LEVER
14	6504	THROTTLE LEVER FULCRUM PIN
14R	7614R	RUBBER GRIP
15	6133	THROTTLE BALL
16	6513	PUSH PIN
17	6507	PUSH PIN "O"-RING
18	6178	CONNECTING PIPE (36") STANDARD
NS	6178-1	CONNECTING PIPE (18") OPTIONAL
NS	6178-2	CONNECTING PIPE (24") OPTIONAL
20	6290	RETAINER SPRING
33	6193	CHISEL BUSHING HEX .580"
NS	6195	CHISEL BUSHING RND .680" (OPT.)

WHEN ORDERING TOOLS SPECIFY
CHISEL BUSHING SIZE AND
HANDLE PIPE LENGTH

WARNING:

ALWAYS DISCONNECT THE AIR SUPPLY BEFORE CHANGING CHISELS OR DISMANTLING THE TOOL FOR SERVICE OR REPAIR. FOR MAXIMUM SAFETY WE ADVISE THE INSTALLATION OF A SHUT-OFF VALVE AT THE END OF THE AIR LINE.

Just Tools Inc.

33A Haas Road, Toronto, On M9W 3A1

Tel: 416-748-0707 Fax: 416-748-0706

Toll Free: 1-888-748-0707 E-mail: sales@justools.com