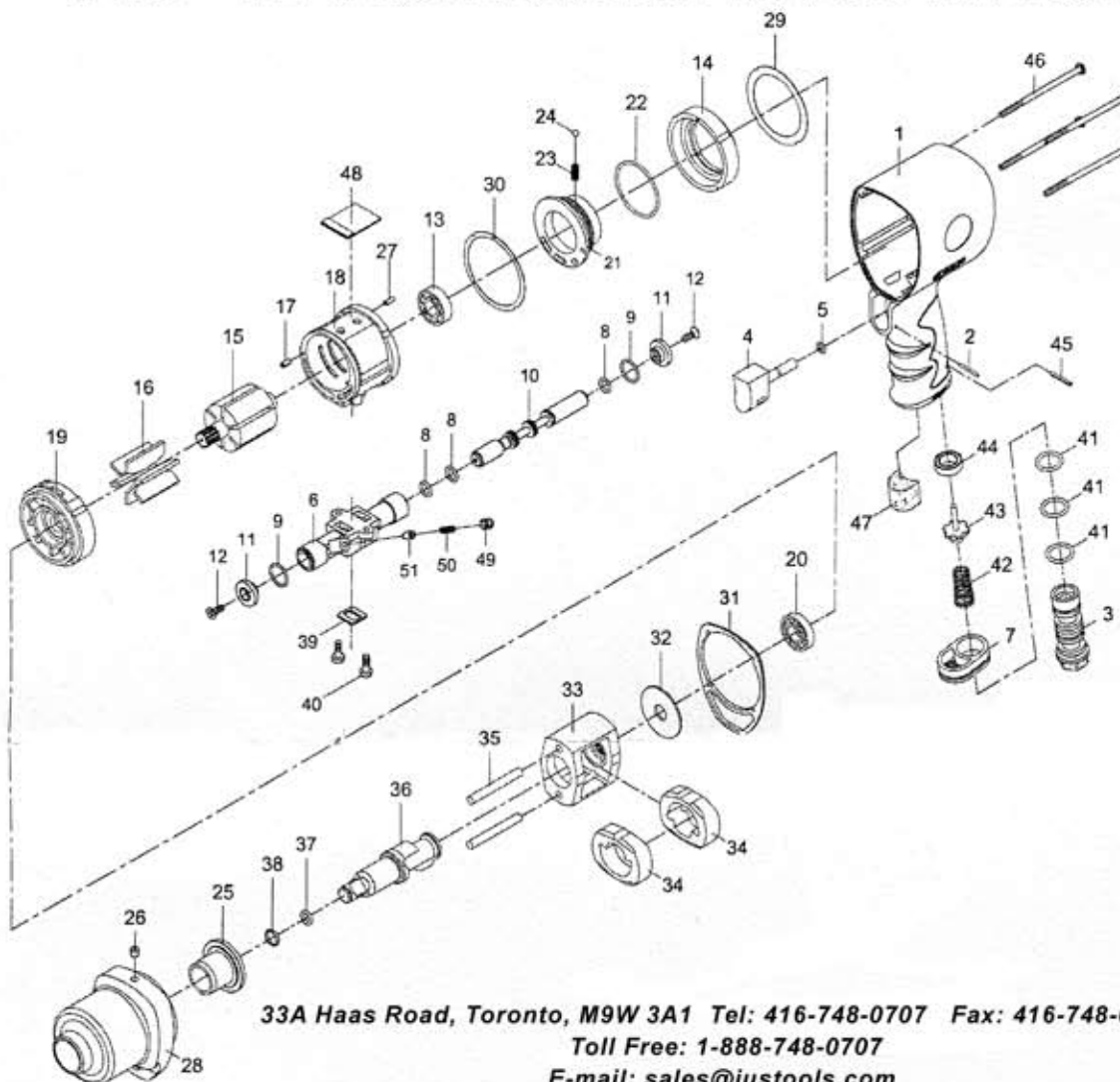


7160 1/2" PROFESSIONAL IMPACT WRENCH



33A Haas Road, Toronto, M9W 3A1 Tel: 416-748-0707 Fax: 416-748-0706
Toll Free: 1-888-748-0707
E-mail: sales@justools.com

Index No.	Parts No.	Description	Index No.	Parts No.	Description
1	43-4033P01	Motor Housing	27	70117	Spring Pln (2x5)
2	62054	Spring Pln (2x20)	28	43-403328	Hammer Case
3	43-401203	Air Inlet	29	43-403334	Gasket
4	43-403204	Trigger	30	43-403336	Gasket
5	OR00400100	O-Ring (4x1)	31	43-403335	Gasket
6	43-403306	Reverse Valve	32	43-403327	Washer
7	41-401207	Exhaust Diffuser	33	43-403308	Hammer Cage
8	OR00645086	O-Ring (3) (6.45x0.86)	34	43-403111	Hammer (2)
9	OR01104103	O-Ring (2) (11.4x1.25)	35	43-403117	Hammer Pln (2)
10	43-403310	Reverse Stem	36	43-403102	Anvil (1/2")
11	41-401229	Button (2)	37	40305	O-Ring (6.5x2)
12	61035	Screw (2) (M3x8)	38	40303	Retaining Ring
13	040313	Ball Bearing (6001)	39	41-401237	Gasket
14	43-403349	Fixed Ring	40	41-401250	Screw (2)
15	43-403315	Rotor	41	795847	O-Ring (3) (15.8x2.4)
16	43-403316	Rotor Blade (6)	42	43-403147	Valve Spring
17	70117-13	Spring Pln (2.5x5)	43	43-403148	Valve Stem
18	43-403318	Cylinder	44	43-403145	Rubber Spacer
19	43-403319	Front End Plate	45	70102	Spring Pln (2.5x20)
20	072021	Ball Bearing (EE4)	46	43-403330	Screw (4) (M4x90)
21	43-403321	Air Regulator	47	75-725153	Muffler Material
22	61547	O-Ring (42x2)	48	43-403351	Muffler Material
23	795846	Spring	49	72022	Set Screw (M4x4)
24	40145	Steel Ball (1/8")	50	41-401241	Spring
25	43-403325	Anvil Bushing	51	41-401242	Pin
26	52237	Oil Cap (7/32")			