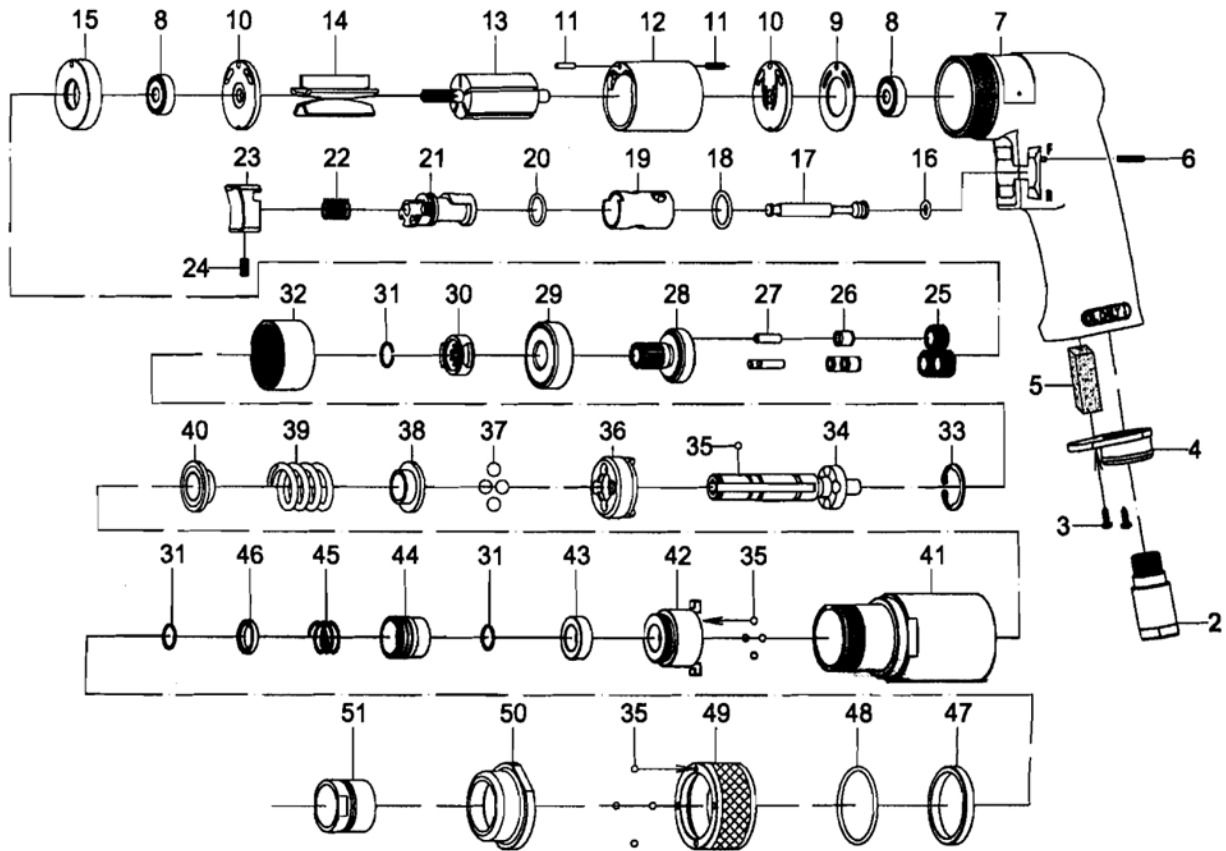


812E EXTERNAL ADJUSTABLE SCREWDRIVER



Index No.	Parts No.	Description	Index No.	Parts No.	Description
1	81352	Rubber Grip	27	30124	Pin (3) (Ø4*13.8L)
2	70103	Air Inlet	28	80226	Work Spindle
3	40309	Screw (2) (M3*8L)	29	080227	Ball Bearing (6201Z)
4	70110	Exhaust Diffuser	30	80229	Drive Clutch
5	82250	Damping Material	31	80230	Retaining Ring (3)
6	80202	Spring Pin (Ø2.5*24L)	32	80222	Internal Gear
7	81301	Motor Housing	33	80231	Snap Ring (ISTW-18)
8	030113	Ball Bearing (2) (626ZZ)	34	80232	Cam Spindle
9	80211	Motor Gasket	35	40145	Steel Ball (9) (1/8")
10	80214	End Plate (2)	36	80234	Clutch
11	80217	Spring Pin (2) (Ø2.5*10L)	37	80235	Steel Ball (4) (1/4")
12	80218	Cylinder	38	80236	Thrust Washer
13	80215	Rotor	39	812E37	Spring
14	80216	Rotor blades (5)	40	812E36	Thrust Washer
15	80219	Spacer	41	812E28	Clamp Nut
16	70107	O-Ring (Ø4.8*Ø1.9)	42	812E38	Guide
17	80205	Valve Stem	43	80240	Spacer
18	80247	O-Ring (Ø13.8*Ø2)	44	80242	Ball Retainer
19	80206	Reverse Bushing	45	80243	Spring
20	80209	O-Ring (Ø12*Ø1.6)	46	80244	Washer
21	80210	Reverse Lever	47	812E21	Adjust Nut
22	70108	Valve Spring	48	812E12	O-Ring (Ø33.5*Ø2)
23	80204	Trigger	49	812E20	Adjust Ring
24	70935	Set Screw (M4*8L)	50	812E41	Head Cap
25	80223	Planet Gear (3)	51	812E39	Indicator
26	80225	Bushing (3)			