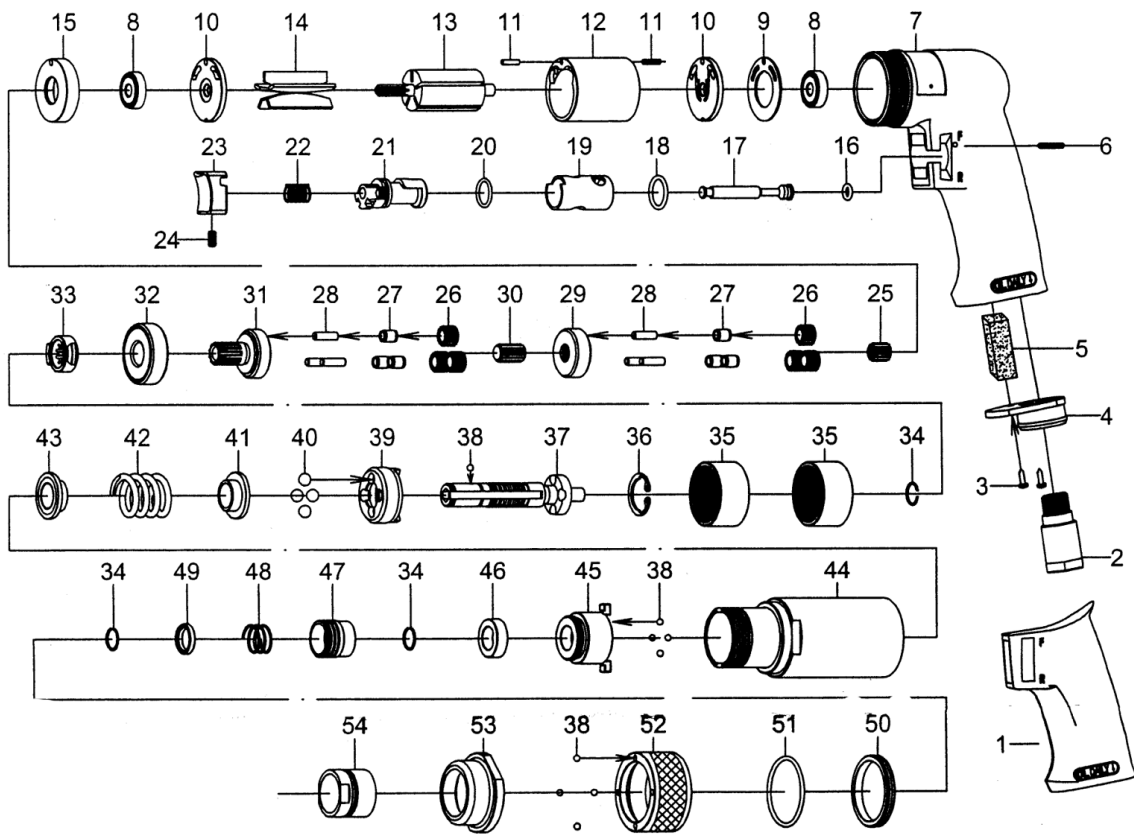


813E AIR SCREWDRIVER
- EXTERNAL ADJUSTABLE



Index No.	Parts No.	Description	Index No.	Parts No.	Description
1	81352	Rubber Grip	28	30124	Pin (6) (Ø4*13.8L)
2	70103	Air Inlet	29	70427	Reduction Spindle
3	40309	Screw (2) (M3*8L)	30	70421	Center Gear
4	70110	Exhaust Diffuser	31	80326	Work Spindle
5	82250	Damping Material	32	080227	Ball Bearing (6201Z)
6	80202	Spring Pin (Ø2.5*24L)	33	80229	Drive Clutch
7	81301	Motor Housing	34	80230	Retaining Ring (3)
8	030113	Ball Bearing (2) (626ZZ)	35	80222	Internal Gear (2)
9	80211	Motor Gasket	36	80231	Snap Ring (ISTW-18)
10	80214	End Plate (2)	37	80232	Cam Spindle
11	80217	Spring Pin (2) (Ø2.5*10L)	38	40145	Steel Ball (9) (1/8")
12	80218	Cylinder	39	80234	Clutch
13	80215	Rotor	40	80235	Steel Ball (4) (1/4")
14	80216	Rotor Blades (5)	41	80236	Thrust Washer
15	80219	Spacer	42	813E37	Spring
16	70107	O-Ring (Ø4.8*Ø1.9)	43	812E36	Thrust Washer
17	80205	Valve Stem	44	813E28	Clamp Nut
18	80247	O-Ring (Ø13.8*Ø2)	45	812E38	Guide
19	80206	Reverse Bushing	46	80240	Spacer
20	80209	O-Ring (Ø12*Ø1.6)	47	80242	Ball Retainer
21	80210	Reverse Lever	48	80243	Spring
22	70108	Valve Spring	49	80244	Washer
23	70104	Trigger	50	812E21	Adjust Nut
24	70935	Set Screw (M4*8L)	51	812E12	O-Ring (Ø33.5*Ø2)
25	70420	Pinion Gear	52	812E20	Adjust Ring
26	70423	Planet Gear (6)	53	812E41	Head Cap
27	70425	Bushing (6)	54	812E39	Indicator

Just Tools Inc.