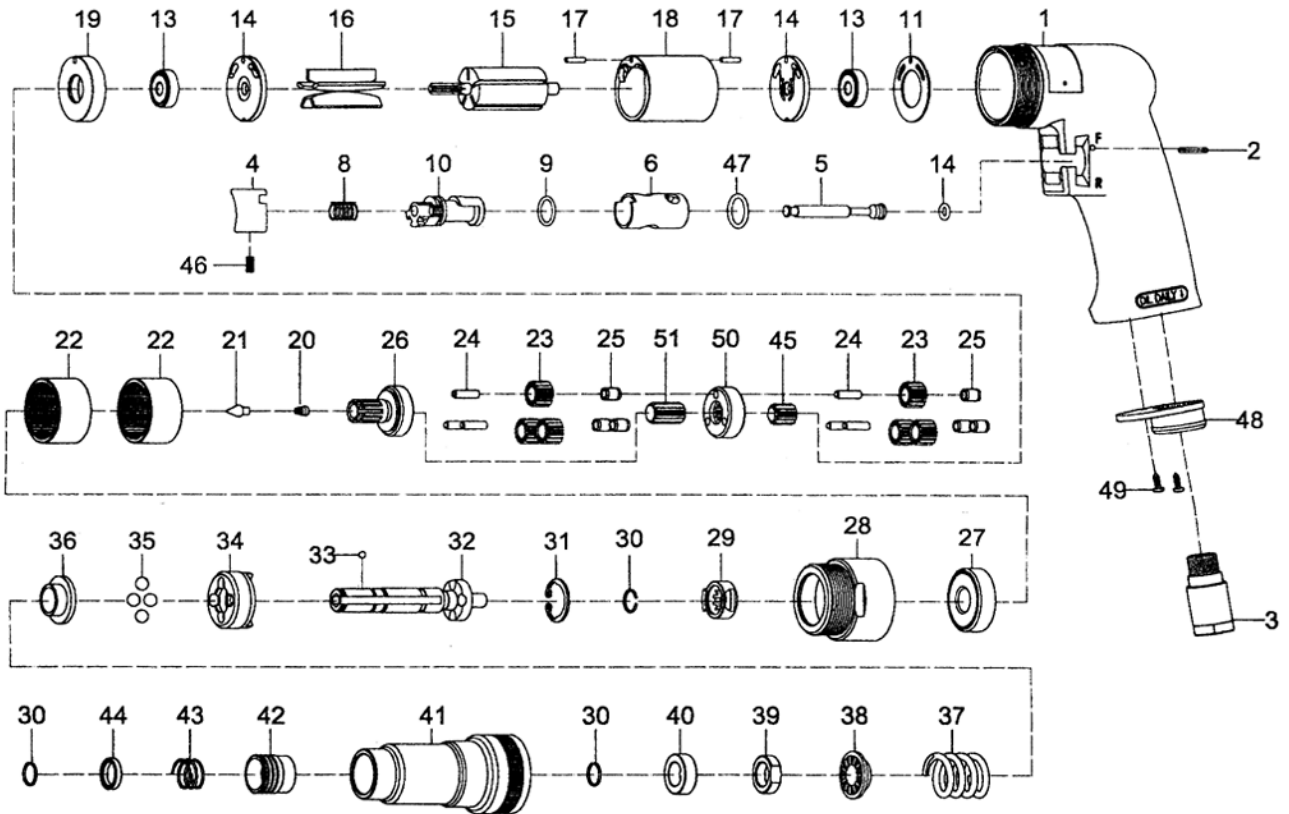


813 1/4" AIR SCREWDRIVER - ADJUSTABLE CLUTCH



Index No.	Parts No.	Description	Index No.	Parts No.	Description
1	81301	Housing	27	080227	Ball Bearing (6201Z)
2	80202	Spring Pin (Ø2.5*24L)	28	80328	Clamp Nut
3	70103	Air Inlet	29	80229	Drive Dog
4	70104	Trigger	30	80230	Retaining Ring (3)
5	80205	Valve Stem	31	80231	Snap Ring (ISTW-18)
6	80206	Reverse Bushing	32	80232	Cam Spindle
7	70107	O-Ring (Ø4.8*Ø1.9)	33	40145	Steel Ball (1/8")
8	70108	Valve Spring	34	80234	Clutch
9	80209	O-Ring (Ø12*Ø1.6)	35	80235	Steel Ball (4) (1/4")
10	80210	Reverse Lever	36	80236	Thrust Washer
11	80211	Motor Gasket	37	80237	Spring
13	030113	Ball Bearing (2) (626ZZ)	38	80238	Washer
14	80214	End Plate (2)	39	80239	Adjust Nut
15	80215	Rotor	40	80240	Spacer
16	70116	Rotor blades (5)	41	80241	Clutch Housing
17	80217	Spring Pin (2) (Ø2.5*10L)	42	80242	Ball Retainer
18	80218	Cylinder	43	80243	Spring
19	80219	Spacer	44	80244	Washer
20	80220	Spring	46	70122	Set Screw (M4*6L)
21	80221	Spring Guide	47	80247	O-Ring (Ø13.8*Ø2)
22	80222	Internal Gear	48	70110	Exhaust Diffuser
23	70423	Planet Gear (6)	49	40309	Screw (2) (TS2.9)
24	30124	Pin (6) (Ø4*13.8L)	50	70427	Reduction Spindle
25	70425	Bushing (6)	51	70421	Center Gear
26	80326	Work Spindle			