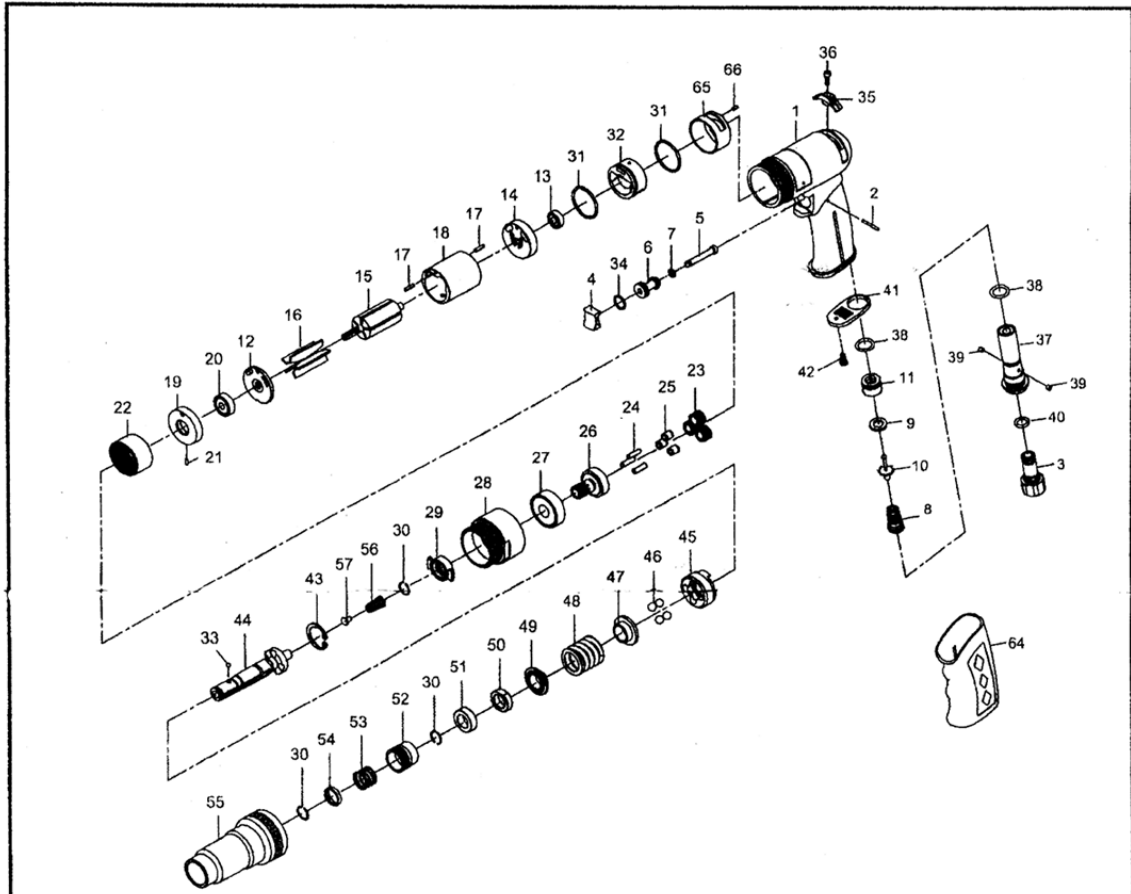


8130 1/4" AIR SCREWDRIVER - ADJUSTABLE CLUTCH



| Index No. | Parts No. | Description | Index No. | Parts No. | Description |
|-----------|----------------|-------------------------|-----------|----------------|------------------------|
| 1 | 75-725101-0001 | Motor Housing | 31 | OR02607108-1 | O-Ring (2) (26.7X1.78) |
| 2 | AS000102-11 | Pin (2X18.8) | 32 | 75-725121-11 | Reversing Valve |
| 3 | 75-725103-0003 | Air Inlet | 33 | 40145-11 | Steel Ball (1/8") |
| 4 | AS00304-12 | Trigger | 34 | 80209-11 | O-Ring (12X1.5) |
| 5 | 75-725105-11 | Valve Stem | 35 | 75-725110-0013 | Reversing Valve Knob |
| 6 | 75-725106-11 | Valve Bushing | 36 | 75-725136-11 | Screw (M3X10L) |
| 7 | 40333-12 | O-Ring (6X1.5) | 37 | 75-725137-0003 | Fixed Shaft |
| 8 | 73108-11 | Spring | 38 | 500111-11 | O-Ring (2) (10.8X2) |
| 9 | 73153-11 | Rubber Spacer | 39 | PN03000300 | Pin (2) (3X3) |
| 10 | 500110-11SUB | Valve Stem | 40 | OR00705105-1 | O-Ring (7.5X1.5) |
| 11 | AS00207-11 | Valve | 41 | 75-725107-0018 | Exhaust Diffuser |
| 12 | 80214-11 | End Plate | 42 | 40309-11 | Screw (TS2.9) |
| 13 | 052213-11 | Ball Bearing (696zz) | 43 | 80231-11 | Snap Ring (ISTW-18) |
| 14 | 75-725114-11 | Rear End Plate | 44 | 80232-11 | Cam Spindle |
| 15 | 80215-11 | Rotor | 45 | 80234-11 | Clutch |
| 16 | 80216-11 | Rotor Blade (5) | 46 | 80235-11 | Steel Ball (4) (1/4") |
| 17 | 80217-11 | Spring Pin (2) (2.5X10) | 47 | 80236-11 | Thrust Washer |
| 18 | 80218-11 | Cylinder | 48 | 80237-11 | Spring |
| 19 | 75-725119-11 | Front End Plate | 49 | 80238-11 | Washer |
| 20 | 030113-11 | Ball Bearing (626zz) | 50 | 80239-11 | Adjust Nut |
| 21 | 70117-11 | Spring Pin (2X5) | 51 | 80240-11 | Spacer |
| 22 | 80222-11 | Internal Gear | 52 | 80242-11 | Ball Retainer |
| 23 | 80223-11 | Planet Gear (3) | 53 | 80243-11 | Spring |
| 24 | 30124-11 | Pin (3) (4X13.8) | 54 | 80244-11 | Washer |
| 25 | 80225-11 | Bushing (3) | 55 | 80241-11 | Clutch Housing |
| 26 | 80226-11 | Work Spindle | 56 | 80220-11 | Spring |
| 27 | 080227-11 | Ball Bearing (6201z) | 57 | 80221-11 | Spring Guide |
| 28 | 80228-11 | Clamp Nut | 64 | 75-725152-0018 | Rubber Grip |
| 29 | 80229-11 | Drive Dog | 85 | 75-725112-11 | Reverse Valve Cage |
| 30 | 80230-11 | Retaining Ring (3) | 66 | 51217-11 | Spring Pin (2X4) |

82-7251-0001