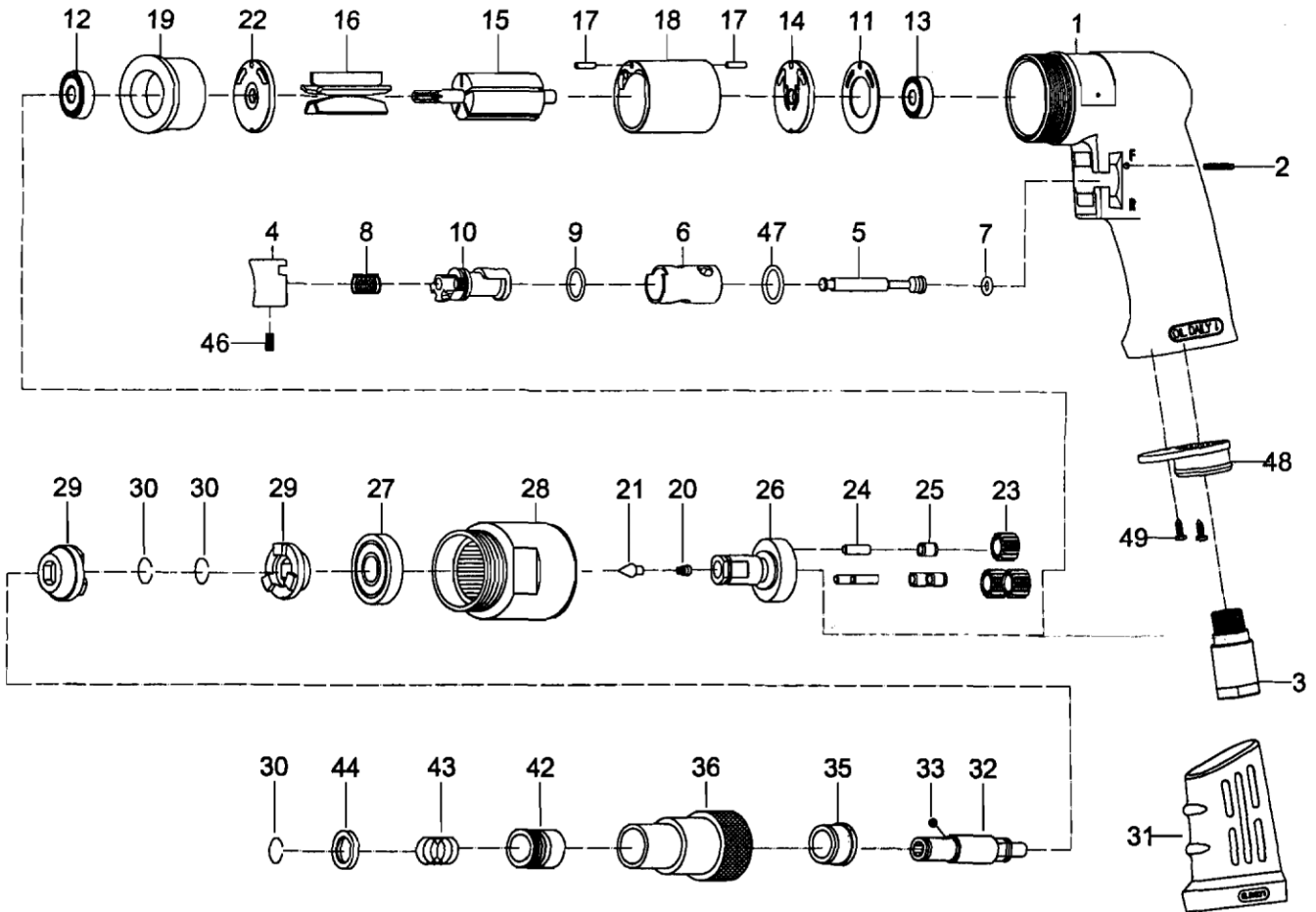


814 1/4" SCREWDRIVER - POSITIVE CLUTCH



Index No.	Parts No.	Description	Index No.	Parts No.	Description
1	81301	Housing	22	80414	End Plate
2	80202	Spring Pin (Ø2.5*24L)	23	80223	Planet Gear (3)
3	70103	Air Inlet	24	30124	Pin (3) (Ø4*13.8L)
4	70104	Trigger	25	80225	Bushing (3)
5	80205	Valve Stem	26	80426	Work Spindle
6	80206	Reverse Bushing	27	080227	Ball Bearing (6201Z)
7	70107	O-Ring (Ø4.8*Ø1.9)	28	80428	Clamp Nut
8	70108	Valve Spring	29	80429	Drive Dog(2)
9	80209	O-Ring (Ø12*Ø1.6)	30	80230	Retaining Ring (3)
10	80210	Reverse Lever	31	80252	Grip
11	80211	Motor Gasket	32	80432	Cam Spindle
12	030120	Ball Bearing (608ZZ)	33	40145	Steel Ball (1/8")
13	030113	Ball Bearing (626ZZ)	35	80435	Clutch Bushing
14	80214	End Plate	36	80436	Clutch Housing
15	80415	Rotor	42	80242	Ball Retainer
16	80216	Rotor Blades (5)	43	80243	Spring
17	80217	Spring Pin (2) (Ø2.5*10L)	44	80244	Washer
18	80218	Cylinder	46	70935	Set Screw (M4*8L)
19	80419	Front End Plate	47	80247	O-Ring (Ø13.8*Ø2)
20	80220	Spring	48	70110	Exhaust Diffuser
21	80221	Spring Guide	49	40309	Screw (2) (TS2.9)