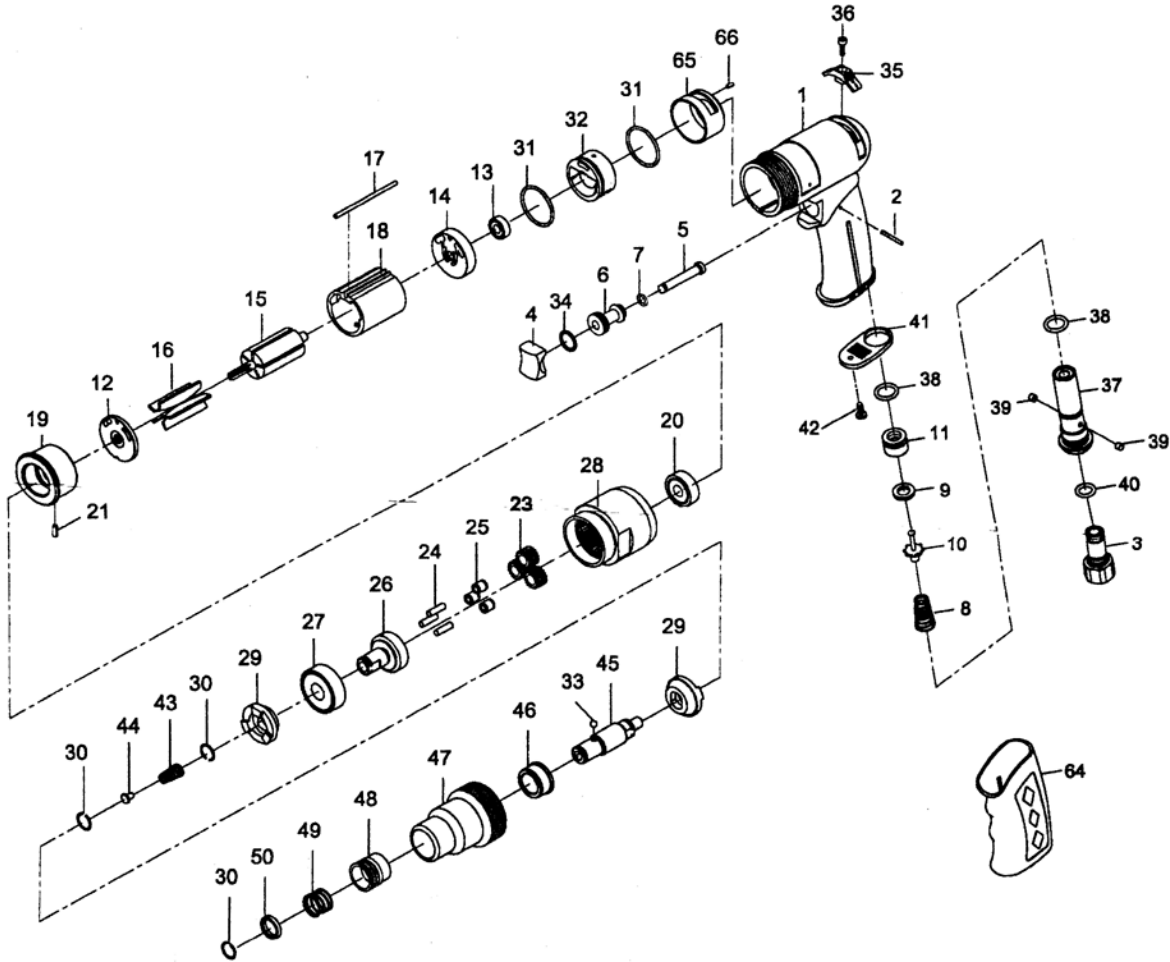


## 8140 1/4" SCREWDRIVER - ADJUSTABLE CLUTCH



Index No.	Parts No.	Description	Index No.	Parts No.	Description
1	75-725101-0001	Motor Housing	28	80428-11	Clamp Nut
2	AS000102-11	Pin (2X18.8)	29	80429-11	Drive Dog (2)
3	75-725103-0003	Air Inlet	30	80230-11	Retaining Ring (3)
4	AS00304-12	Trigger	31	OR02607108-1	O-Ring (2) (26.7X1.78)
5	75-725105-11	Valve Stem	32	75-725121-11	Reversing Valve
6	75-725106-11	Valve Bushing	33	40145-11	Steel Ball (1/8")
7	40333-12	O-Ring (6X1.5)	34	80209-11	O-Ring (12X1.5)
8	73108-11	Spring	35	75-725110-0013	Reversing Valve Knob
9	73153-11	Rubber Spacer	36	75-725136-11	Screw (M3X10L)
10	500110-11SUB	Valve Stem	37	75-725137-0003	Fixed Shaft
11	AS00207-11	Valve	38	500111-11	O-Ring (2) (10.8X2)
12	80414-11	End Plate	39	PN03000300	Pin (2) (3X3)
13	052213-11	Ball Bearing (696zz)	40	OR00705105-1	O-Ring (7.5X1.5)
14	75-725114-11	Rear End Plate	41	75-725107-0018	Exhaust Diffuser
15	80415-11	Rotor	42	40309-11	Screw (TS2.9)
16	80216-11	Rotor Blade (5)	43	80220-11	Spring
17	80217-13	Pin (2.5X55)	44	80221-11	Spring Guide
18	80218-22	Cylinder	45	80432-11	Cam Spindle
19	84-725119-11	Front End Plate	46	80435-11	Clutch Bushing
20	030120-11	Ball Bearing (608zz)	47	80436-11	Clutch Housing
21	70117-11	Spring Pin (2X5)	48	80242-11	Ball Retainer
22	80223-11	Planet Gear (3)	49	80243-11	Spring
23	30124-11	Pin (3) (4X13.8)	50	80244-11	Washer
24	80225-11	Bushing (3)	64	75-725152-0018	Rubber Grip
25	80426-11	Work Spindle	65	75-725112-11	Reverse Valve Cage
26	080227-11	Ball Bearing (6201z)	66	51217-11	Spring Pin (2X4)