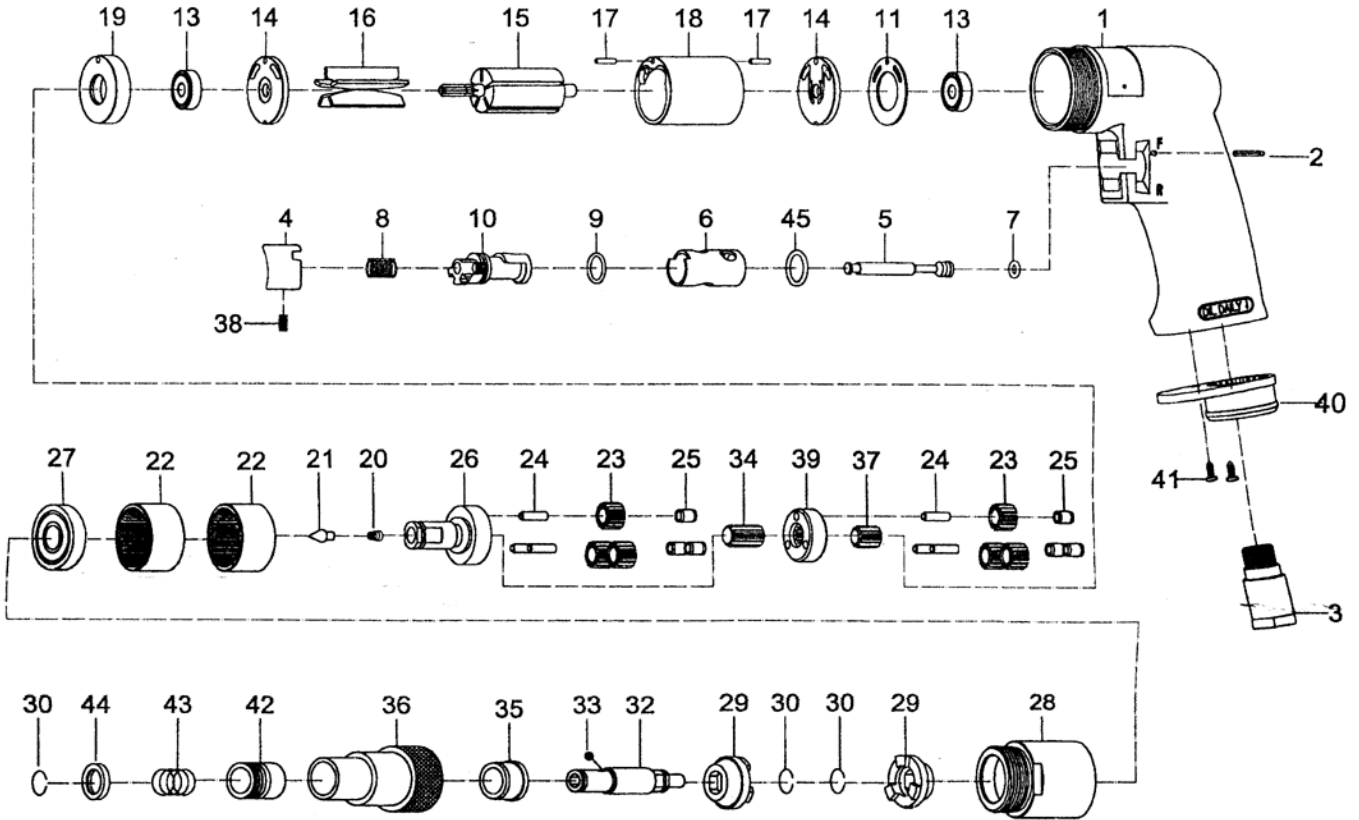


816 1/4" SCREWDRIVER - POSITIVE CLUTCH



Index No.	Parts No.	Description	Index No.	Parts No.	Description
1	81301	Housing	24	30124	Pin (6) (Ø4*13.8L)
2	80202	Spring Pin (Ø2.5*24L)	25	70425	Bushing (6)
3	70103	Air Inlet	26	83326	Work Spindle
4	70104	Trigger	27	080227	Ball Bearing (6201Z)
5	80205	Valve Stem	28	80328	Clamp Nut
6	80206	Reverse Bushing	29	80429	Drive Dog(2)
7	70107	O-Ring (Ø4.8*Ø1.9)	30	80230	Retaining Ring (3)
8	70108	Valve Spring	32	80432	Cam Spindle
9	80209	O-Ring (Ø12*Ø1.5)	33	40145	Steel Ball (1/8")
10	80210	Reverse Lever	34	70421	Center Gear
11	80211	Motor Gasket	35	80435	Clutch Bushing
13	030113	Ball Bearing (2) (626ZZ)	36	80436	Clutch Housing
14	80214	End Plate	37	70420	Pinion Gear
15	80215	Rotor	38	70935	Set Screw (M4*8L)
16	80216	Rotor Blades (5)	39	70427	Reduction Spindle
17	80217	Spring Pin (2) (Ø2.5*10L)	40	70110	Exhaust Diffuser
18	80218	Cylinder	41	40309	Screw(2) (TS2.9)
19	80219	Front End Plate	42	80242	Ball Retainer
20	80220	Spring	43	80243	Spring
21	80221	Spring Guide	44	80244	Washer
22	80222	Internal Gear (2)	45	80247	O-Ring (Ø13.8*Ø2)
23	70423	Planet Gear (6)			