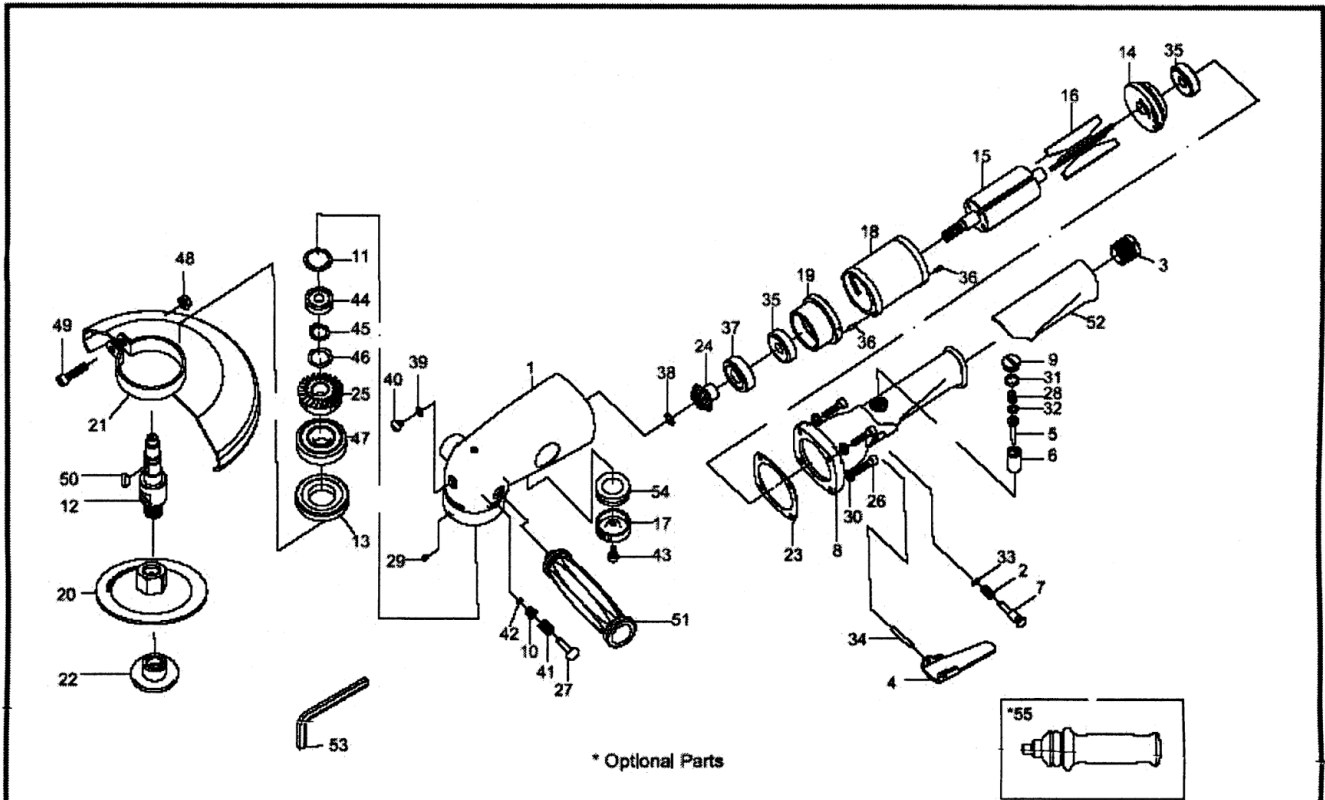


831L 7" ANGLE GRINDER



Index No.	Parts No.	Description	Index No.	Parts No.	Description
1	5G-619701	Motor Housing	27	5G-619735	Shaft
2	5G-619702	Spring	28	5G-619736	Spring
3	5G-619703	Air Inlet	29	5G-619737	Screw (M4X0.7P)
4	5G-619704	Lever	30	40344	Spring Washer (4) (M5)
5	5G-619705	Valve Pin	31	70109	O-Ring (9.8*1.9)
6	5G-619706	Valve Bushing	32	OR00600200	O-Ring (6*2)
7	5G-619707	Safe Lever	33	STW-5	Retaining Ring STW-5
8	5G-619709	Governer Case	34	61902	Spring Pin (4x28L)
9	5G-619710	Valve Screw	35	080227	Ball Bearing(2) (6201z)
10	5G-619711	Screw	36	40317-14	Spring Pin(2) (3x8L)
11	5G-619713	Spacer	37	061932	Ball Bearing (6202zz)
12	5G-619724-11	Gear Shaft (5/8-11UNC)	38	ISTW-9	Retaining Ring
13	5G-619724-12	Gear Shaft (M14X2.0P)	39	61907	O-Ring (4.9X2.2)
14	5G-619714	End Plate	40	61927	Screw (M6X1.0P)
15	5G-619715	Rotor	41	70108	Spring
16	5G-619716	Rotor Blade(4)	42	59235	O-Ring (4.47*1.78)
17	5G-619720	Exhaust Deflector	43	62039	Screw (M5X10L)
18	5G-619718	Cylinder	44	0206013	Ball Bearing (629zz)
19	5G-619719	Front End Plate	45	STW-15	Retaining Ring STW-15
20	5G-619727-11	Grindstone Base (5/8-11UNC)	46	WW-16	Spring Washer WW-16
21	5G-619727-12	Grindstone Base (M14X2.0P)	47	06303ZZ	Ball Bearing (6303zz)
22	5G-619729	Disc Cover	48	6E-610035	Nut (M4)
23	5G-619730-11	Disc Nut (5/8-11UNC)	49	63025-12	Bolt (M6*25L)
24	5G-619730-12	Disc Nut (M14X2.0P)	50	HK05000800	Key
25	5G-619731	Gasket	51	5G-619751	Handle
26	5G-619732	Pinlon Gear	52	5G-619752	Rubber Grip
	5G-619733	Bevel Gear	53	5G-619754	Hex. Key Wrench (3/8")
	5G-619734	Screw (4) (M5X20L)	54	5G-619750	Damping Material(2)
			*55	5G-619753	Vibration Reduced Handle