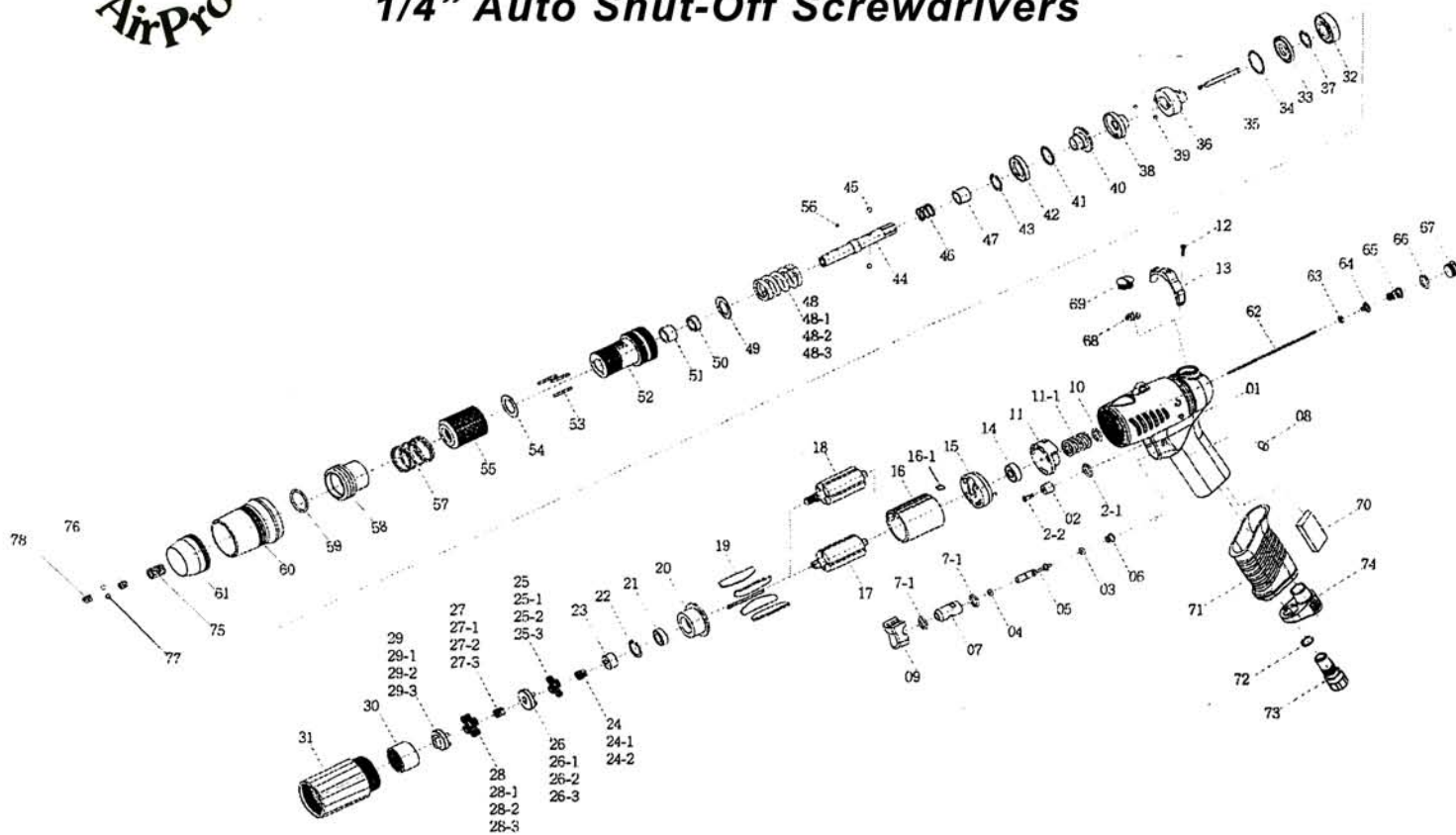


AirPro

A48PBP, A50PBP, A55PBP & A60PBP

AirPro

1/4" Auto Shut-Off Screwdrivers



No.	Part No.	Part Name	Q.	No.	Part No.	Part Name	Q.	No.	Part No.	Part Name	Q.
1	5L2100	Pistol Housing	1	26	1P6294	First Gear Cage [A48]	1	48-1	6N5001	Torque Spring (3.5)[A50]	1
2	2C2002	Blank Cap	1	26-1	1P2280	First Gear Cage [A50]	1	48-2	6N5002	Torque Spring (3.6)[A55]	1
2-1	7Q2008	O Ring (5x1.0)	1	26-2	1P2290	First Gear Cage [A55]	1	48-3	6N5004	Torque Spring (3.8)[A60]	1
2-2	7S2106-1	Set Screw	1	26-3	1P3281	First Gear Cage [A60]	1	49	2S5121	Washer [22x15]	1
3	7Q2006	O Ring (3.5x2)	1	27	1G6271	Second Main Gear [A48]	1	50	3S2109	Bushing	1
4	7Q6112	Valve O Ring (3x1.5)	1	27-1	1G6270	Second Main Gear [A50]	1	51	2S2241	Anvil Bushing	1
5	6S2023	Valve Pin	1	27-2	1G6090	Second Main Gear [A55]	1	52	3A5201	Clutch housing	1
6	6N2106	Cone Spring	1	27-3	1G6084	Second Main Gear [A60]	1	53	6S2012	Needle Pin [2.0x19.8]	3
7	6S2024	Valve Bushing	1	28	1P6111	Second Plant Gear [A48]	7	54	3S5101	Regulation Washer	1
7-1	7Q2009	O-Ring(8X1.0)	2	28-1	1P6110	Second Plant Gear [A50]	4	55	3A6001	Torque Ring	1
8	5L2116	Cap	2	28-2	1P6130	Second Plant Gear [A55]	4	56	7S3107	Ball [2.38]	1
9	5L2701	Button	1	28-3	1P6121	Second Plant Gear [A60]	4	57	6N2110	Spring (0.6x10.2x11)	1
10	7Q2011	O-Ring	1	29	1P6296	Second Gear Cage [A48]	1	58	5S2001	Bit Slide Sleeve	1
11	2P6001	Valve	1	29-1	1P6287	Second Gear Cage [A50]	1	59	6N2001	C Ring	1
11-1	6N5006	Spring	1	29-2	1P6288	Second Gear Cage [A55]	1	60	5A3212	Housing Cap	1
12	7S2107	Set Screw	1	29-3	1P6289	Second Gear Cage [A60]	1	61	5A6020	Rear Housing	1
13	2L6011	Switch	1	30	1S2061	Internal Gear	1	62	6S2006	Operation Rod	1
14	7S5001	Ball Bearing [606ZZ]	1	31	5A6041	Front Housing	1	63	7Q2006	O-Ring (3.5X2)	1
15	1S6001	End Plate	1	32	7S6003	Ball Bearing [6001ZZ]	1	64	6S2021	Valve Plate	1
16	1P6005	Cylinder	1	33	2S6103	Retainer	1	65	6N2104	Cone Spring	1
16-1	2S2023	Key	1	34	7S2102	Ball [2.0]	32	66	2Q5001	O-Ring (P10)	1
17	1S6045	Rotor [A48 A50 A55]	1	35	3S5001	Pilot Pin	1	67	2S2011	Screw Cap	1
18	1P6044	Rotor [A60]	1	36	3S5211	Rear Clutch	1	68	2Q5001	O-Ring (P10)	1
19	1P6051	Blade	6	37	6N2006	C Ring	1	69	2S2011	Screw Cap	1
20	1P6063	Front Plate	1	38	3S5217	Center Clutch	1	70	2P3040	First Silencer	1
21	7S2002	Ball Bearing (688ZZ)	1	39	7S2112	Ball [1/8"]	2	71	5L2201	Pistol Cover	1
22	6N2020	C Ring	1	40	3S5221	End Clutch	1	72	2Q5001	O-Ring (P10)	1
23	1S3050	Connect [A48 A50 A55]	1	41	7S2102	Ball [2.0]	25	73	2S2005	Air Inlet	1
24	1P2271	First Main Gear [A48]	1	42	3S5231	Ball Race	1	74	2P3025	Second Silencer	1
24-1	1P2270	First Main Gear [A50]	1	43	6N2006	C Ring	1	75	5N3001	Suspension Ring	1
24-2	1P2090	First Main Gear [A55]	1	44	3S5027	Anvil (6.35Hex)	1	76	6N6001	Spring	1
25	1P2102	First Plant Gear [A48]	7	45	7S2105	Ball (4.0)	2	77	7S2102	Ball (2.0)	2
25-1	1P2110	First Plant Gear [A50]	4	46	6N5110	Spring (0.8x10x16)	1	78	7S2111	Screw (M5 x 5)	2
25-2	1P2130	First Plant Gear [A55]	4	47	3S2227	Slide Base	1				
25-3	1P2101	First Plant Gear [A60]	4	48	5N5003	Torque Spring (3.4)[A48]	1				

Just Tools Inc. 33A Haas Road, Toronto, On M9W 3A1
Tel: 416-748-0707 Toll Free: 1-888-748-0707 Fax: 416-748-0706
E-mail: sales@justools.com