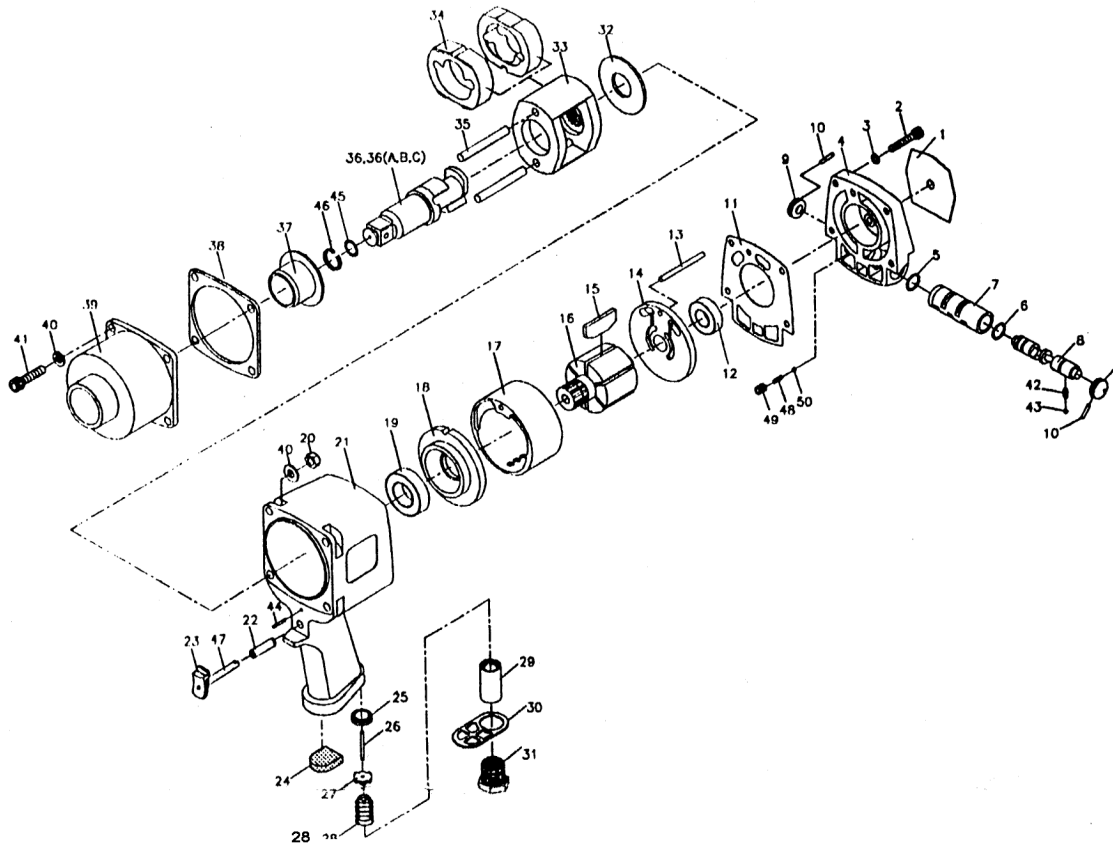


CT-1000 3/4" Impact Wrench



PARTS LIST:

NO	DESCRIPTION	PARTS NO	Qty	REMARK
1	REAR PLATE	1002000000	1	
2	SCREW	1003000000	4	
3	WASHER	401300000W	4	
4	REAR COVER	1005000000	1	
5	φ 14*P1.78 O-RING	1433000000	1	
6	φ 14*P1.78 O-RING	1433000000	1	
7	THROTTLE BOSH	1007000000	1	
8	REVERSE THROTTLE	1008000000	1	
9	REGULATOR	7511000000	2	
10	φ 2.5*15 PIN	0458000000	2	
11	REAR COVER GASKET	1011000000	1	
12	6003 BEARING	7520000000	1	
13	PIN	1013000000	1	
14	REAR BEARING PLATE	1014000000	1	
15	VANE	1015000000	6	
16	ROTOR	1016000000	1	
17	CYLINDER	1017000000	1	
18	FRONT BEARING PLATE	1018000000	1	
19	608 BEARING	1019000000	1	
20	M8 NUT	32430000N	4	
21	HOUSING	1021000000	1	
22	TRIGGER BOSH	1022000000	1	
23	TRIGGER	9624000000	1	
24	SILENCER	4008000000	1	
25	VALVE RUBBER	1025000000	1	
26	PIN	102600000P	1	
27	VALVE	1027000000	1	
28	SPRING	1028000000	1	
29	SPRING PAD	1029000000	1	
30	EXHAUST DEFLECTOR	1030000000	1	
31	INLET	1031000000	1	
32	REAR WASHER	1032000000	2	
33	HAMMER FRAME	1033000000	1	
34	HAMMER	1034000000	2	
35	φ 8 PIN	1035000000	2	

NO	DESCRIPTION	PARTS NO	Qty	REMARK
36	ANVIL (DRIVER: 3/4")	1036000000	1	
36A	ANVIL (DRIVER: 1")	103600000A	1	★
36B	2" EXTENDED ANVIL (DRIVER: 3/4")	103600000B	1	★
36C	2" EXTENDED ANVIL (DRIVER: 1")	103600000C	1	★
37	BUSHING	1037000000	1	
38	FRONT COVER GASKET	1038000000	1	
39	HAMMER CASE	1039000000	1	
40	M8 WASHER	3203000000	8	
41	M8*30L SCREW	1041000000	4	
42	φ 2.8*8.2 SPRING	0423000000	1	
43	1/8" STEEL BALL	0420000000	1	
44	φ 2.1*L16 PIN	7544000000	1	
45	φ 12.5*φ 17.5*P2.5 O-RING	7546000000	1	
46	3/4" RETAINER SUPPORT RING	7545000000	1	
47	TRIGGER ROD	102300000P	1	
48	SPRING	1043000000	1	
49	SCREW	1044000000	1	
50	φ 4 STEEL BALL	0424000000	1	

K1	TUNE UP KIT	K101100000	1SET	
K2	SCREW AND WASHER KIT	K104400000	1SET	
K3	ANVIL HAMMER KIT	K10360000(A,B,C)	1SET	
K4	VALVE KIT	K102500000	1SET	
K5	TRIGGER KIT	K965300000	1SET	
K6	REGULATOR ASSEMBLY KIT	K100700000	1SET	
K7	REGULATOR KNOBS KIT	K751100000	1SET	
K1	5,6,10,11,13,15,24,25,26,27,28,32,42,43,44,45,46			
K2	2,3,20,32,40,41,48,49,50			
K3	34,35,36(36(A,B,C)),45,46			
K4	25,26,27,28,29			
K5	23,44,47			
K6	5,6,7,8,42,43			
K7	9,10			