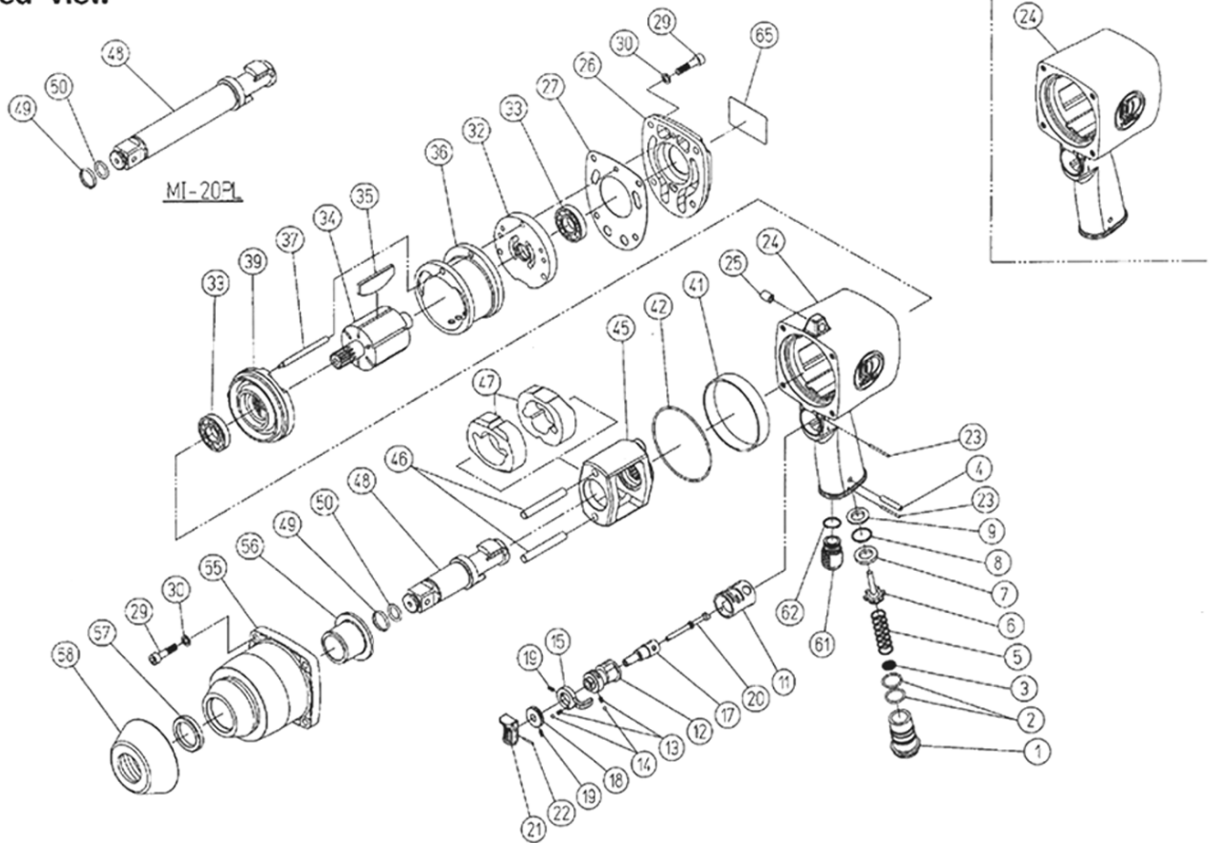


# 3/4" IMPACT WRENCH MODEL MI-20P

# TOKU

TOKU PNEUMATIC PRODUCTS

Exploded view



## PARTS LIST MI-20P

Index No.	Parts No.	Description	No. Req'd
001	43-14-38-060	Inlet Bushing(PT)	1
	43-14-36-070	Inlet Bushing(NPT)	(1)
002	13-11-17-017	O-Ring AS568-017	2
003	13-68-04-003	Air Screen	1
004	13-06-20-058	Spring Pin 3/16X25.4	1
005	13-08-03-181	Throttle Valve Spring	1
006	43-13-94-080	Throttle Valve	1
007	13-68-04-007	Throttle Valve Seat	1
008	13-11-03-015	O-Ring S-18	1
009	43-13-95-D80	Throttle Valve Spacer	1
011	43-18-96-201	Reverse Valve Bushing	1
012	43-18-96-211	Reverse Valve	1
013	13-08-09-005	Spring	2
014	13-05-02-008	Steel Ball 1/8	2
015	43-18-96-231	Reverse Valve Lever	1
017	43-18-96-150	Control Valve	1
018	43-18-96-260	Control Valve Knob	1
019	13-22-03-006	Hex. Socket Seat Screw M3X6	2
020	43-18-96-100	Throttle Push Pin	1
021	13-67-03-060	Trigger	1
022	13-06-01-134	Spring Pin 1.6X14	1
023	13-04-06-022	Pin	2
024	43-18-96-010	Motor Housing	1
025	13-06-08-010	Spring Pin 8X10	1
026	43-18-96-350	Housing Cover	1
027	13-62-02-049	Housing Cover Packing	1
029	13-17-06-025	Hex. Socket Head Cap Screw M6X25	8
030	13-13-11-016	Spring Washer 1/4	8
032	43-14-20-37B	Rear End Plate	1

Index No.	Parts No.	Description	No. Req'd
033	13-01-20-005	Bearing EE-5	2
034	43-14-36-390	Rotor	1
035	13-71-10-011	Vane	6
036	43-18-96-360	Liner	1
037	43-18-96-A70	Liner Pin	1
039	43-18-96-38B	Front End Plate	1
041	43-14-26-930	Housing Adaptor Ring	1
042	13-11-17-040	O-Ring AS568-040	1
045	43-18-96-440	Hammer Frame	1
046	43-18-96-460	Hammer Pin	2
047	43-18-96-450	Hammer	2
048	43-18-96-500	Anvil Shank	1
049	13-08-03-113	Socket Retainer	1
050	13-11-01-013	O-Ring P-12.5	1
055	43-18-96-520	Clutch Housing	1
056	43-18-96-490	Shank Bushing	1
057	13-12-02-030	Oil Seal VB25355	1
058	13-62-01-018	Nose Shield	1
061	43-18-96-050	Exhaust Deflector	1
062	13-11-03-012	O-Ring S-14	1
065	13-73-05-093	Name Plate	1
	43-18-96-50C	Anvil Shank CP(Incl.Index No.48,49&50)	(1CP)
	43-18-96-52C	Clutch Housing CP(Incl.Index No.55,56&57)	(1CP)
MI-20PL			
048	43-19-01-500	Anvil Shank L	1
049	13-08-03-113	Socket Retainer	1
050	13-11-01-013	O-Ring P-12.5	1
	43-19-01-50C	Anvil Shank L CP(Incl.Index No.48,49&50)	(1CP)