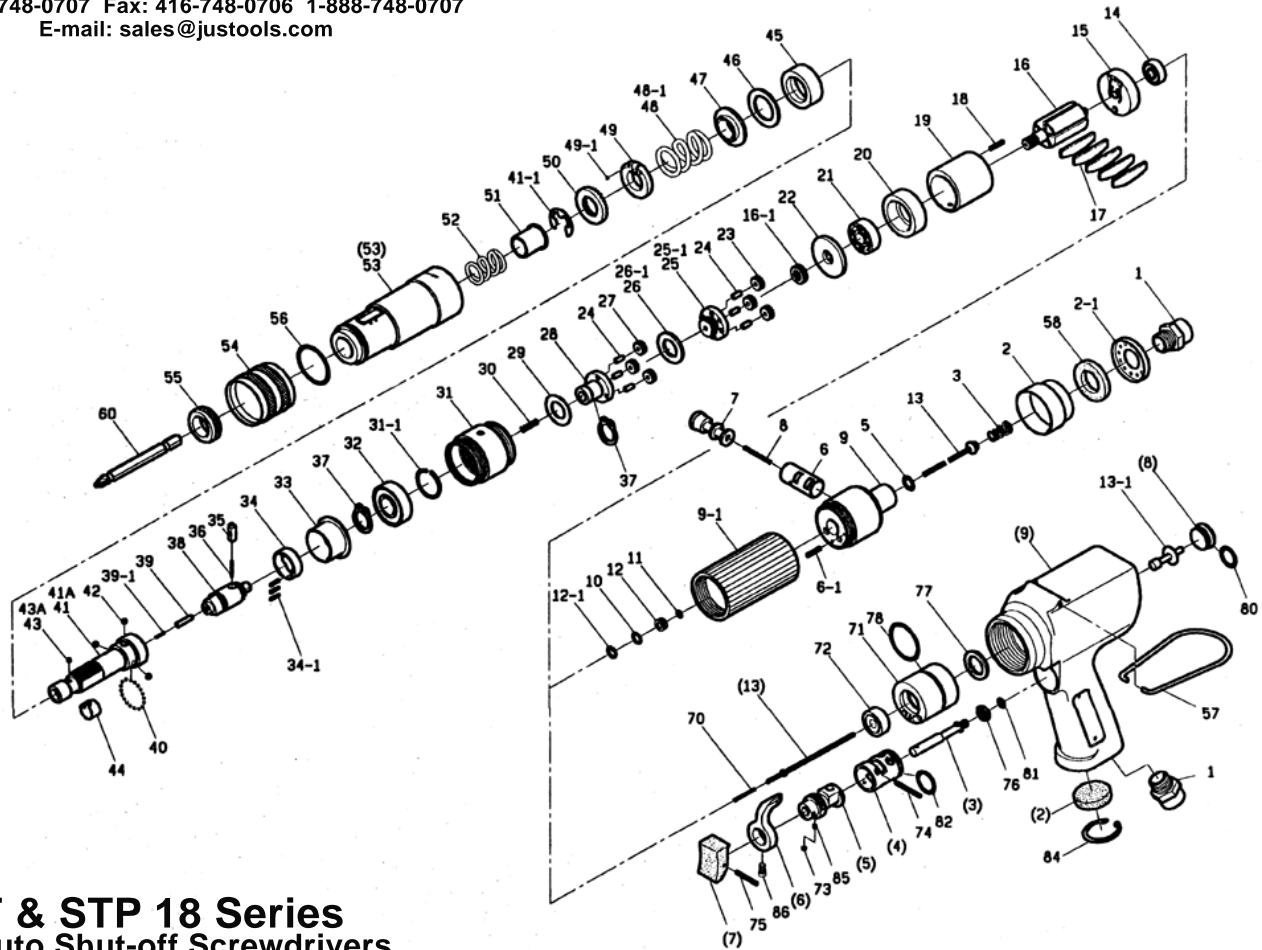


Just Tools Inc.

33a Haas Road, Toronto, On M9W 3A1
 Tel: 416-748-0707 Fax: 416-748-0706 1-888-748-0707
 E-mail: sales@justtools.com



ST & STP 18 Series 1/4" Auto Shut-off Screwdrivers

PART LIST (WHEN ORDERING SPARE PART, PLEASE SPECIFY TOOL MODEL, PART NO. AND PART NAME)

REF NO	PART NO	PART NAME	QTY	REF NO	PART NO	PART NAME	QTY	REF NO	PART NO	PART NAME	QTY
STRAIGHT HANDLE				35	0140-361	CONTROL PIN	1	(13)	0181-040	START BAR	1
2	0180-090	EXHAUST DEFLECTOR	1	36	9070-001	SPRING (2.35*7)	1	13-1	0181-041	SHUT BAR	1
2-1	0180-092	DEFLECTOR CAP	1	37	9050-S12	S TYPE HOLDER (S12)	2	(53)	0181-310	CLUTCH CASING	1
3	9070-102	SPRING (CONE)6m/m	1	38	0180-360	DRIVING CLUTCH	1	70	9070-303	SPRING (3*14)	1
5	9062-061	O. RING (6.1*2.3)	1	39	9033-13	NEEDLE PIN 3*12.8	1	71	0181-050	REAR PLATE VALVE	1
6	0180-021	REVERSE VALVE	1	39-1	9070-002	SPRING (2.5*8)	1	72	0181-052	HOLDER CAP	1
6-1	9032-12	NEEDLE PIN 2*11.8	1	40	9010-2.4	BALL (3/32)	19	73	9010-3.2	BALL (1/8)	1
7	0180-020	REVERSE TRIGGER	1	41	0180-630	ANVIL (HEX6.35)	1	74	9032-23	NEEDLE PIN 2*22.8	1
8	9070-203	SPRING (3.5*19)	1	41A	0180-631	ANVIL (5m/m)-FOR A TYPE	1	75	9032-16	NEEDLE PIN 2*15.8	1
9	0180-010	CASING	1	41-1	9050-E10	E TYPE (ETW10)	1	76	0101-023	AIR INLET SPACER (TFL)	1
9-1	0180-011	OUTER CASING	1	42	9010-5	BALL (5m/m)	3	77	0181-053	SHUTTING SPACER (PU)	1
10	906S-060	O. RING (6*1)	1	43	9010-3.2	BALL (1/8)	1	78	9060-022	O. RING (25.12*1.78)	1
11	9061-021	O. RING (2*1.5)	1	43A	9010-4	BALL (5/32)-FOR A TYPE	1	80	9062-11	O. RING (11*2)	1
12	0100-051	ORING HOLDER	1	44	0140-640	BIT BAND	1	81	9060-S4	O. RING (3.5*1.5)	1
12-1	9050-R8	R TYPE HOLDER (R8)	1	45	0180-350	CLUTCH	1	82	9060-017	O. RING (17.17*1.78)	1
13	0180-040	START BAR	1	46	0180-352	SPACER (TFL)	1	84	9050-R24	R TYPE HOLDER (R24)	1
30	9070-301	SPRING (4.5*11.7)	1	47	0180-351	SPACER	1	85	9070-005	SPRING (3*3)	1
58	0180-091	MUFFLER FILTER	1	48	9070-503	SPRING (23.1*29*2.5)	1	86	9114-404	SCREW (M4*0.7)	1
COMMON PARTS				48-1	9070-523	SPRING (23.7*29*2.8)	1	FOR ST1807 & STP1807			
1	9090-19	AIRINLET 1/4	1	49	0180-321	ADJUSTING NUTLOCK	1	23	0180-240	PLANET GEAR	6
14	9020-625	BALL BEARING (625)	1	49-1	9010-1.6	BALL (1/16)	2	25-1	0180-251	GEAR CAGE & GEAR	1
15	0180-110	REAR PLATE	1	50	0180-320	ADJUSTING NUT	1	26-1	0180-257	SPACER (2m/m)	1
16	0180-130	ROTOR	1	51	0140-620	ANVIL BUSHING	1	FOR ST1811 & STP1811			
17	0180-140	BLADE	5	52	9070-401	SPRING (17.1*10)	1	23	0180-240	PLANET GEAR	3
18	9032-16	NEEDLE PIN 2*16	1	53	0180-310	CLUTCH CASING	1	25	0180-250	GEAR CAGE & GEAR	1
19	0180-120	CYLINDER	1	54	0180-690	ADJUSTING BAND	1	26	0180-256	SPACER (2m/m)	1
20	0180-111	FRONT PLATE	1	55	0180-610	BIT BUSHING CASING	1	27	0180-241	PLANET GEAR	3
21	9020-608	BALL BEARING (608)	1	56	9060-022	O. RING (25*1.78)	1	FOR ST1817 & STP1817			
22	0180-116	SPACER (3m/m)	1	57	0220-080	SUSPENSION RING	1	16-1	0180-252	SUN GEAR	1
24	9033-7.8	NEEDLE PIN 3*7.8	6	60	9102-50	BIT NO2(6.35*50)	1	25	0180-250	GEAR CAGE & GEAR	1
28	0180-230	GEAR CAGE	1	PISTOL HANDLE				26	0180-256	SPACER (2m/m)	1
29	0180-236	SPACER (1m/m)	1	(2)	0101-091	MUFFLER FILTER	1	27	0180-241	PLANET GEAR	6
31	0180-220	INTERNAL GEAR	1	(3)	0101-030	TRIGGER BAR	1				
31-1	9050-R28	R TYPE HOLDER (R28)	1	(4)	0101-021	VALVE	1				
32	9026-001	BALL BEARING (6001)	1	(5)	0101-020	REVERSE VALVE	1				
33	0180-363	BALL KEEPER	1	(6)	0101-022	REVERSE LEVER	1				
34	0100-362	CONTROL RING	1	(7)	0101-032	TRIGGER	1				
34-1	9031-011	NEEDLE PIN 1.5*7.8	3	(8)	0101-011	SCREW CAP	1				
				(9)	0181-010	PISTOL CASING	1				