

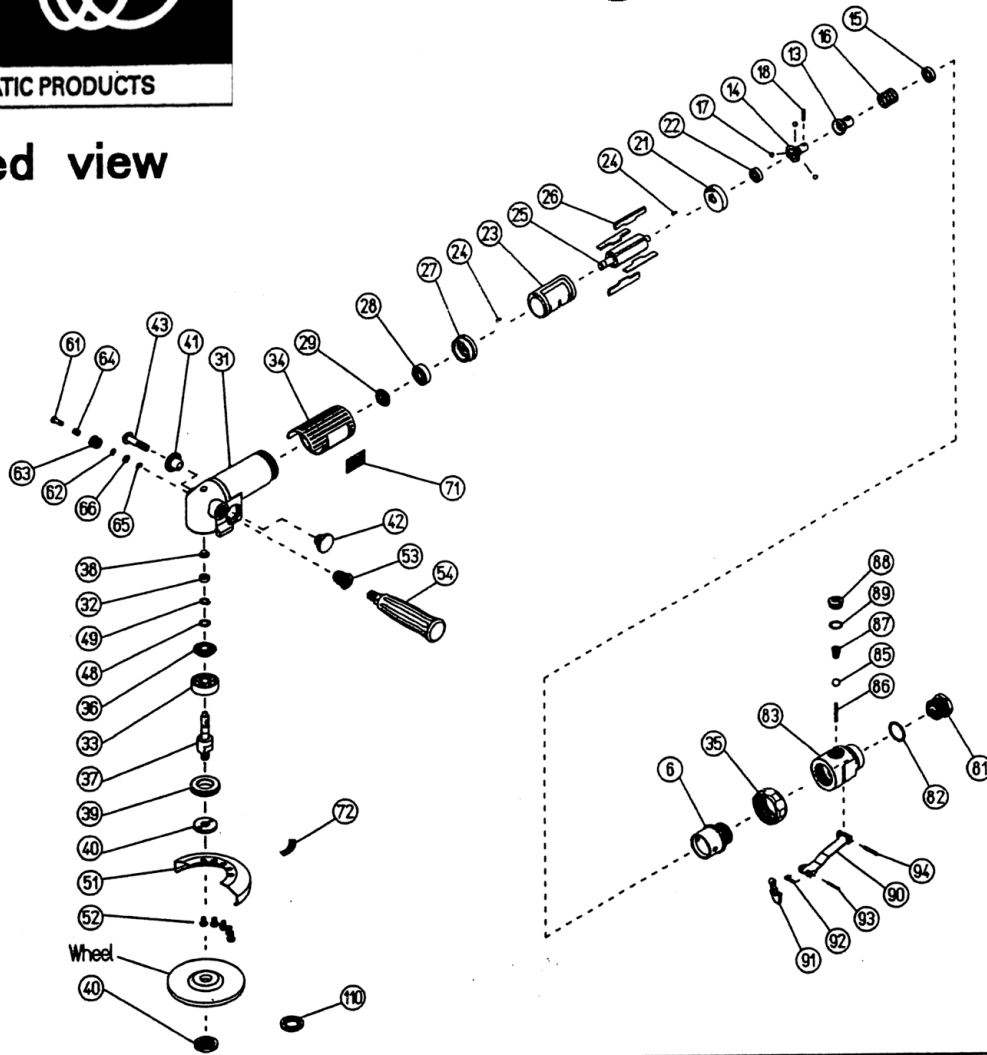
# TOKU



TOKU PNEUMATIC PRODUCTS

## TAG-45 4-1/2" Angle Grinder

### Exploded view



#### Parts List

Symbol No.	Parts No.	Q'ty Req.	Description	Symbol No.	Parts No.	Q'ty Req.	Description
.006	420571A10	1	Case Cap	061	420576360	1	Stopper Pin
013	420576L80	1	Governor Valve	062	131103003	1	O-Ring S-5
014	420576M00	1	Governor Body	063	420576370	1	Stopper Pin Cage
015	420576L30	1	Pin Stopper	064	130802206	1	Stopper Pin Spring 6X7(0.5)
016	130802205	1	Spring 18X19.5X1.2	065	130303004	1	Retaining Ring E-Type E-4
017	130502014	3	Steel Ball 7/32(5.56mm)	066	131309005	1	Washer M5
018	130400301	1	Needle Roller 3X15.8 F	071	137302068	1	Name Plate
021	420576C80	1	Rear Plate	072	137302062	1	Wheel Cover Name Plate
022	130103098	1	Ball Bearing 698ZZ	081	420572N7B	1	Air Inlet PT CP
023	420576D50	1	Cylinder	082	131103019	1	O-Ring S-24
024	130602106	2	Spring Pin 2.5X6	083	420571C00	1	Valve Body
025	420576E00	1	Rotor	085	130505028	1	Rubber Ball 7/16
026	137101031	4	Vane	086	130400302	1	Needle Roller 3X27.8 A
027	420576E80	1	Front Plate	087	130802202	1	Valve Spring
028	130103029	1	Ball Bearing 629ZZ	088	420420B40	1	Valve Cap
029	420576M60	1	Pinion Gear	089	131103012	1	O-Ring S-14
031	420571A00	1	Case	090	420591B50	1	Lever
032	130103095	1	Ball Bearing 695ZZ	091	420591B60	1	Stopper
033	130112001	1	Ball Bearing 6300ZZ	092	130810004	1	Coil Spring
034	136602014	1	Grip Rubber	093	130602020	1	Spring Pin 2X20
035	420571A50	1	Case Nut	094	130603022	1	Spring Pin 3X22
036	420576M50	1	Bevel Gear	110	420580H10	1	Wheel Ring Washer
037	420575600	1	Bevel Gear Shaft	Accessories	134004014	1	Combination Open Ended Spanner 14X19
038	420576N00	1	Upper Cap	Accessories	130802147	1	Wheel Carrier Socket Bar
039	420576G10	1	Bearing Nut	Accessories	137521004	1	Oil
040	420575160	2	Wheel Ring(UNC)				
041	420576300	1	Muffler A				
042	420576310	1	Muffler B				
043	131908035	1	Hex Socket Button Screw M8X35				
048	420576550	1	Washer				
049	130302010	1	Retaining Ring C-Type S-10				
051	420580U00	1	Wheel Cover				
052	132405010	5	Crss Recessed Head Screw M5X10				
053	420406A20	1	Case Bushing				
054	420417N20	1	Dead Handle				