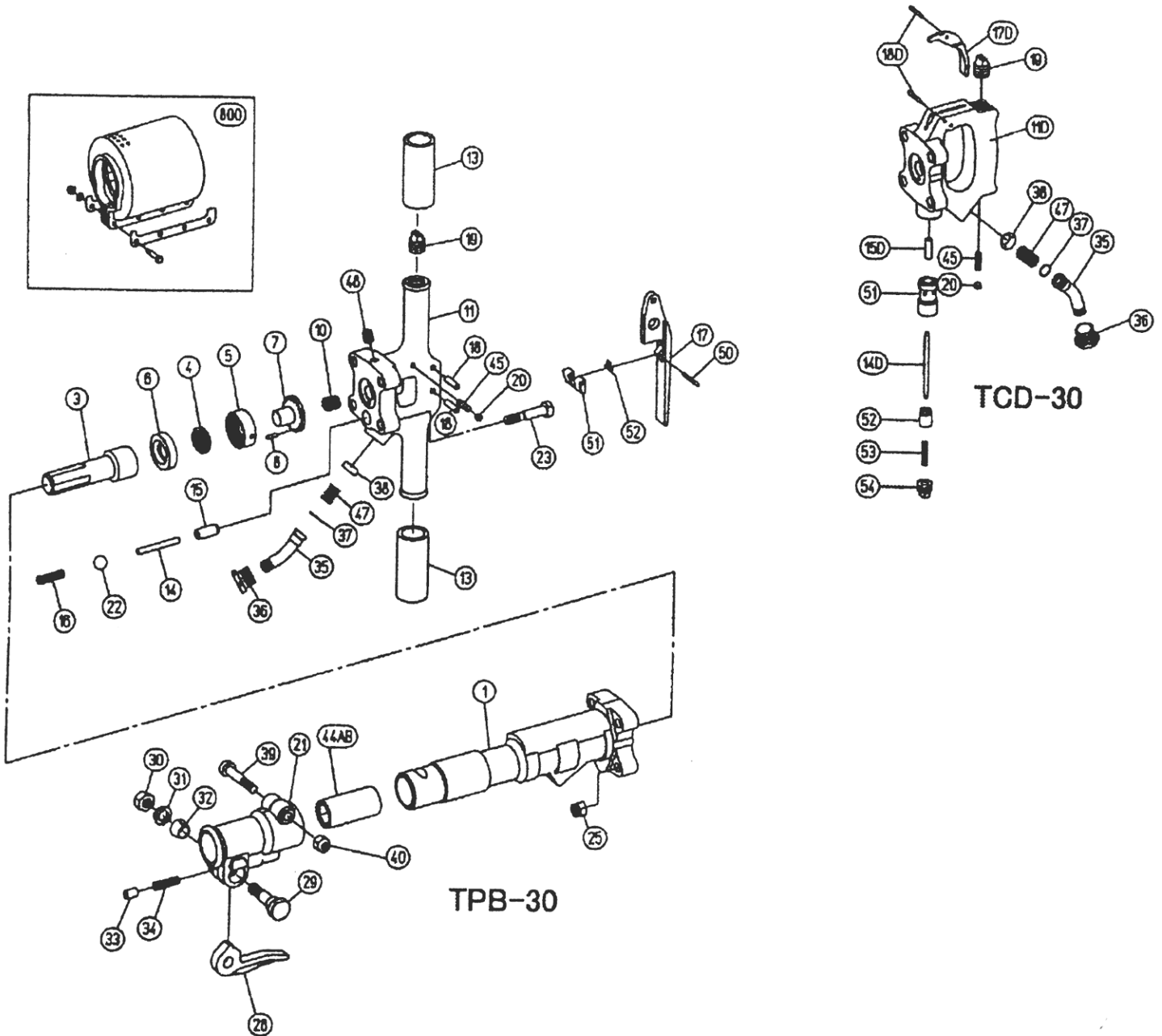


Toku - TPB-30 Paving Breaker TCD- 30 Clay Digger



Just Tools Inc.

33 a Haas Road, Toronto, On M9W 3A1 Tel: 416-748-0707 Fax: 416-748-0706
1-888-748-0707 E-mail: sales@justtools.com

MODELS TPB-30 & TCD-30

Spare Parts Service Chart

PARTS LIST

FOR CONCRETE BREAKER

Symbol No.	Parts No.	Q'ty Req.	Description	MUST REPLACE 100%	HIGH WEAR 70%	MEDIUM WEAR 50%	LOW WEAR 30%	NON WEAR 10%	SUBJECT TO EXTERNAL DAMAGE
1	410201010	1	Cylinder					X	
3	410201040	1	Piston			X			
4	410201151	1	Valve				X		
5	410201191	1	Valve Chest					X	
6	410201171	1	Valve Seat					X	
7	410201201	1	Valve Guide					X	
8	130401025	1	Valve Chest Dowel Pin				X		
10	130801025	1	Plunger Spring					X	
11	410201480	2	Back Head (Bare)					X	
13	136601011	1	Rubber Grip					X	
14	410201270	1	Throttle Valve					X	
15	410201300	1	Throttle Valve Stem Guide					X	
16	130801026	1	Throttle Valve Spring				X		
17	410241910	2	Throttle Lever					X	
18	410201330	1	Throttle Lever Pin 8 x 30					A	
19	134905012	1	Oil Plug NPTF 1/4"					A	
20	134901001	1	Oil Control Plug Hex Pt 1/8"					X	
21	410201530	4	Front Head					X	
23	410201500	4	Back Head Bolt					X	
25	134201012	1	Back Head Bolt Nut					X	
28	410201610	1	Steel Retainer				X		
29	410201620	1	Steel Retainer Bolt					X	
30	410201630	1	Steel Retainer Bolt Nut				X		
31	131301016	1	Steel Retainer Bolt Washer				X		
32	410201640	1	Steel Retainer Bolt Bushing					X	
33	410201650	1	Steel Retainer Plunger			X			
34	130801028	1	Steel Retainer Spring			X			
35	410201370	1	Air Inlet Swivel					X	
36	410201390	1	Air Inlet Swivel Nut					X	
37	131103014	1	Air Inlet Swivel O - Ring S - 16			X			
38	136801005	1	Air Inlet Screen				X		
39	410201540	1	Front Head Bolt					X	
40	134201012	1	Front Head Bolt Nut					X	
(44)	410205570	1	Front Head Bushing 1"	X					
45	136101011	1	Felt Oiler					X	
47	130801027	1	Air Inlet Swivel Spring				X		
48	134903002	1	Oil Tank Plug GD NPTF 1/4"					A	
800	41020187C	(1)	Muffler CP					X	
-	41020148A	(1)	Back Head CP (Inc Sym No. 11,13,14,15, 16,17,18,19,20,35,36,37,38,45,47,48.)					X	
-	41020153D	(1)	Front Head CP (Inc Sym. No.21,28,29,30, 31,32,33,34.)					X	
Back Head for TCD-30: DIGGER									
11D	410211480	1	Back Head (Bare)					X	
14D	130401031	1	Throttle Valve Stem					X	
15D	410221300	1	Throttle Valve Stem Guide					X	
17D	410211120	1	Trigger					X	
18D	130401030	2	Trigger Pin					X	
19	410211720	1	Oil Plug NPTF 1/2"					A	
20	134901001	1	Oil Control Plug Hex PT 1/8"					X	
35	410201370	1	Air Inlet Swivel					X	
36	410201390	1	Air Inlet Swivel Nut					X	
37	131103014	1	Air Inlet Swivel O Ring S - 16			X			
38	136801005	1	Air Inlet Screen				X		
45	136101011	1	Felt Oiler				X		
47	130801027	1	Air Inlet Swivel Spring				X		
51	410211280	1	Throttle Valve Bushig					X	
52	410211270	1	Throttle Valve					X	
53	130801032	1	Throttle Valve Spring				X		
54	410211770	1	Valve Cap NPT					X	
-	41021148A	(1)	Back Head CP					X	

This service chart is a guide to expectant life of component parts. The replacement levels are based on average tool usage over a one year period.

Example : For 10 tools in use : 10 must - replace items will be required per year, 7 high wear items, etc.

Note : Quantities must be increased if the tool is in more service or continuous usage.

LEGEND

X --- Type of wear, if no other comments apply.

A --- Easily lost or damaged during disassembly and reassembly.

- 50 130604040 1 Stop Lever Pin (4 x 40) (Non-Wear 10%)
- 51 410241760 1 Stop Lever (Non-Wear 10%)
- 52 130801046 1 Stop Lever Spring (Non-Wear 10%)