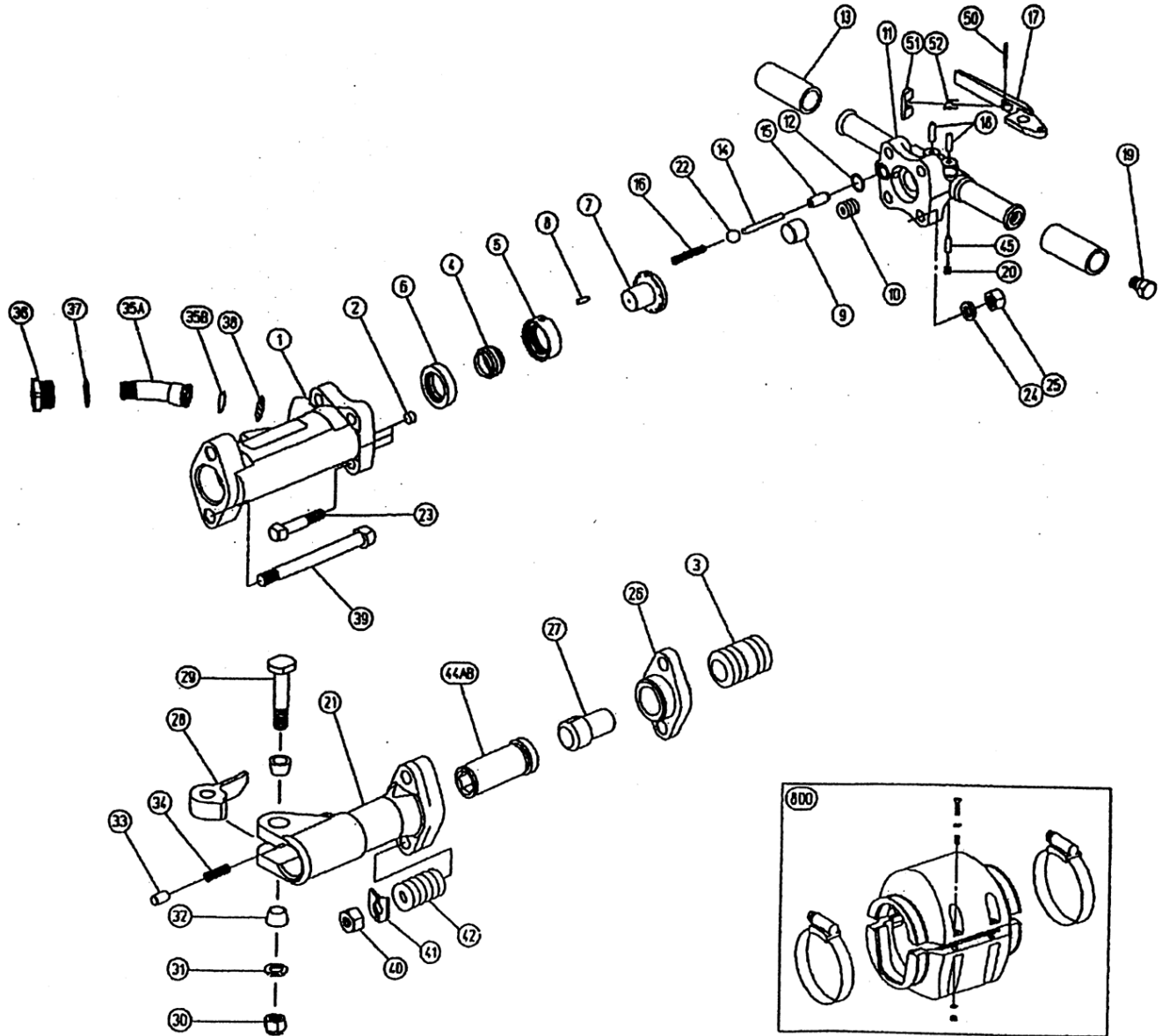




TPB-60 PAVING BREAKER



Just Tools Inc.

33a Haas Road, Toronto, On M9W 3A1
416-748-0707 416-748-0706 (Fax)
1-888-748-0707 E-mail: sales@justtools.com



TPB-60

PAVING BREAKER

MUST REPLACE 100%	70%	50%	30%	10%	SUBJECT TO EXTERNAL DAMAGE
HIGH WEAR	MEDIUM WEAR	LOW WEAR	NON WEAR		

Spare Parts Service Chart

Symbol No.	Parts No.	Q'ty Req.	Description	MUST REPLACE 100%	70%	50%	30%	10%	SUBJECT TO EXTERNAL DAMAGE
1	410241010	1	Cylinder						X
2	136301011	3	Cylinder Plug						X
3	410241041	1	Piston		X				
4	410241150	1	Valve						X
5	410241190	1	Valve Chest						X
6	410241170	1	Valve Seat						X
7	410241200	1	Valve Guide						X
8	130401035	1	Valve Chest Dowel Pin						A
9	410241660	1	Plunger						X
10	130801040	1	Plunger Spring						X
11	410241480	1	Back Head (Bare)						X
12	131105017	1	O-Ring 6227-17	X					
13	136601011	2	Rubber Grip						X
14	410241E00	1	Throttle Pin						X
15	410201300	1	Throttle Valve Stem Guide						X
16	130801009	1	Throttle Valve Spring		X				
17	410241311	1	Throttle Lever						X
18	410201330	2	Throttle Lever Pin						A
19	134905010	1	Oil Plug U3/4-10						A
20	134901001	1	Pipe Plug FP-2 PT1/8						X
21	410241531	1	Front Head						X
22	130505048	1	Polyurethane Rubber Ball 3/4						A
23	131501015	4	Back Head Bolt						X
24	131301116	4	Spring Washer M16						X
25	410241510	4	Back Head Bolt Nut						X
26	410241591	1	Tappet Seat						X
27	410241581	1	Tappet				X		
28	410241610	1	Steel Retainer	X					
29	410241620	1	Steel Retainer Bolt		X				
30	134601019	1	Hex Nylon Nut UNF3/4-16		X				
31	131303048	1	Spring washer W3/4		X				
32	136301010	2	Steel Retainer Bolt Bushing		X				
33	410241650	1	Steel Retainer Plunger		X				
34	130801042	1	Steel Retainer Spring		X				
35A	410271370	1	Air Connection Tube						X
35B	131103023	1	O-Ring S-29	X					
36	410271390	1	Air Connection Nut						X
37	131102002	1	O-Ring G-30	X					
38	136801007	1	Air Inlet Screen						X
39	131501016	2	Front Head Bolt						X
40	410241550	2	Front Head Bolt Nut						X
41	410241560	2	Front Head Bolt Lock Washer						X
42	130801043	2	Front Head Bolt Spring						X
44A	410241572	1	Front Head Bushing 1-1/8"	X					
44B	410245572	(1)	Front Head Bushing 1-1/4"	X					
45	136101011	1	Felt Oiler						X
50	130604040	1	Spring Pin 4X40						X
51	410241760	1	Stop Lever						X
52	130801046	1	Stop Lever Spring						X
800	41024187C	(1)	Muffler CP						X
802	41024148A	(1)	Back Head CP (Inc. Sym. No.11, 13, 14, 15, 17, 18, 19, 20, 45, 50, 51, 52)						X
(44ACP)	41024153D	(1)	Front Head CP 1-1/8 (Inc. Sym. No.21, 28, 29, 30, 31, 32, 33, 34, 44A)						X
(44BCP)	41024553D	(1)	Front Head CP 1-1/4 (Inc. Sym. No.21, 28, 29, 30, 31, 32, 33, 34, 44B)						X

This service chart is a guide to expectant life of component parts. The replacement levels are based on average tool usage over a one year period.

Example : For 10 tools in use: 10 must —replace items will be required per year, 7 high wear items, etc.

Note: Quantities must be increased if the tool is in more service or continuous usage.

LEGEND

X—Type of wear, if no other comments apply.
A—Easily lost or damaged during disassembly and reassembly.